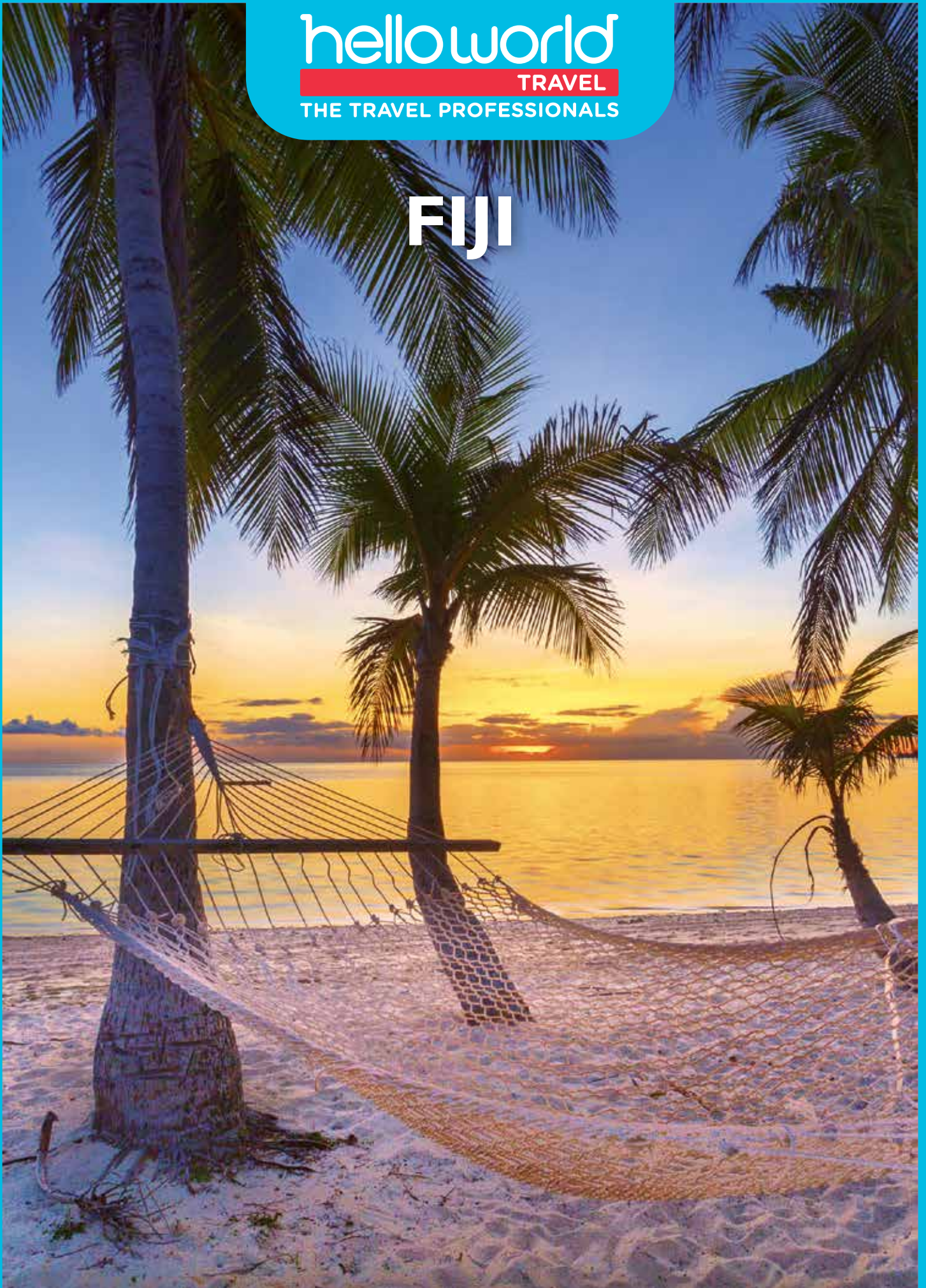


helloworld
TRAVEL
THE TRAVEL PROFESSIONALS

FIJI





EXPERIENCE FIJI WITH VIVA HOLIDAYS

Famous for its sundrenched islands, palm fringed white sand beaches, turquoise blue waters, lush rainforests and rugged volcanic peaks, Fiji offers something for everyone. Stay in luxury resorts, indulge in spa treatments or discover a slice of traditional village life. Be assured you'll always receive a friendly 'bula' welcome!

With over 50 years of experience in the travel business, trust us to make your dream Fiji holiday a reality.

CHOOSE VIVA HOLIDAYS AND LIVE A LIFE OF TRAVEL.





• In Fiji happiness comes naturally and you will receive a warm Fijian 'bula' and smile from the moment you arrive.

Tourism Fiji



Tourism Fiji, Anicea Bothlisberger



Bligh Waters, Suncoast



Sofitel Fiji Resort & Spa, Denarau

CONTENTS

Navigating This brochure	5
Travel Tips	7
Experiences You'll Love	8
Island Adventures	10
Car Hire	11
Transfers	12
Tours	15
Nadi & Surrounds	18
Denarau Island	21
Coral Coast & Pacific Harbour	25
Mamanuca & Yasawa Islands	30
Regional Fiji	38
Island Cruising	41
Accommodation Index	42
Booking conditions	43

WHY CHOOSE VIVA HOLIDAYS

Viva Holidays has been creating exceptional worldwide holiday experiences for over 50 years. Your arrangements will be managed by our travel specialists who are dedicated to servicing enquiries to your chosen destination and are experts at designing holidays to perfectly suit your travel needs. You'll always be in experienced hands when you travel with Viva Holidays.

MORE CHOICE

Our extensive product range caters for every type of holiday. Accommodation, car hire, theme parks, attractions, day and extended tours, rail tours and cruises – we've got it covered.

We have incredible deals available throughout the year, so make sure you ask your travel agent for our best price.

EXCEPTIONAL SERVICE

Exceptional customer service is behind everything we do. That's why we've regularly been voted as the Most Outstanding wholesaler at Australia's National Travel Industry Awards. Our team are passionate about travel and providing outstanding service. Let us do the research, planning and booking to ensure your holiday is one you'll always remember.

PEACE OF MIND

Viva Holidays is a proud member of ATAS, the Australian Federation of Travel Agents Travel Accreditation Scheme, having met the strict financial and customer service accreditation criteria. When you book your holiday with Viva Holidays, you will have peace of mind knowing that you are booking with one of Australia's most trusted travel companies.

24/7 ASSISTANCE

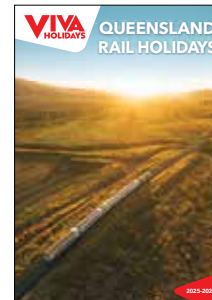
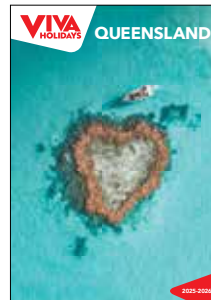
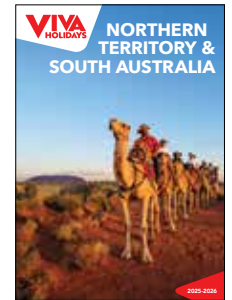
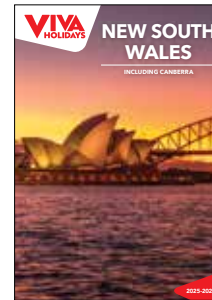
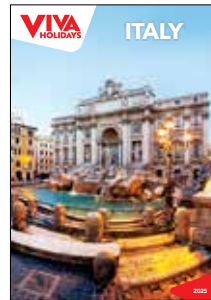
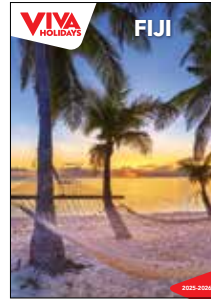
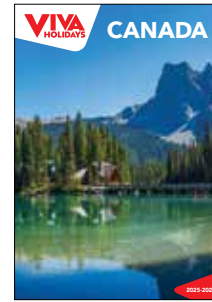
When you book with Viva Holidays, you'll never be on your own. In the event of unforeseen circumstances, our customer care team is available 24 hours a day, seven days a week.

TAILOR MADE HOLIDAYS

Whether it's island hopping around the stunning Mamanuca and Yasawa Islands, seeking adventure on a jetboat ride on the Sigatoka River or simply relaxing at a beachfront resort, our team of travel specialists can design a custom made itinerary just for you!

Let us create your dream holiday today.

LIVE A LIFE OF TRAVEL.
LET VIVA HOLIDAYS TAKE YOU THERE!





Yasawa Islands



Shangri-La Yanuca Island, Fiji



Sri Siva Subramaniya Temple, Nadi

NAVIGATING THIS BROCHURE

The following symbols should be used as a guide to assist in choosing the accommodation or touring option that best suits your needs.

Our Destination Specialists have negotiated a range of special offers. Look for the following symbols on individual property listings and ask your travel agent for full details of the offer available.



Early Bird Offer

A discount off the regular room price is available at certain times of the year for advance bookings.



Kids Dining Offer

A dining offer for children is available, e.g. discounted or free meals. Child ages, meal types and conditions vary.



Free Night Offer

Receive one or more free nights for stays at certain times of the year.



Honeymoon Offer

A special bonus offer is available if you are celebrating your honeymoon. This may include sparkling wine, flowers, chocolate or fruit platters, welcome drinks, romantic dinners, spa treatments, late check-out or room upgrades. A minimum stay may be required and conditions vary. Advise your travel agent at the time of booking.



Bonus Offer

A bonus offer is available at certain times of the year, e.g. free breakfast, food and beverage credit, spa treatment, late check-out, room upgrade and more.

SYMBOL GUIDE



Properties offering free Wi-Fi access in common areas and rooms.



Properties offering in-room disabled facilities.



Properties offering family friendly facilities, which may include a kids club, kids eat free offer, family or interconnecting rooms and discounts off a second room.



Properties featuring an all inclusive price with breakfast, lunch and dinner included. Some properties may also include beverages, day excursions and activities. Conditions may apply. Ask your travel agent at the time of booking for further details.



Properties featuring the Luxury Collection symbol, in our view, provide an exceptional standard of accommodation, facilities and service.

OUR RATINGS

The accommodation ratings featured in this brochure will provide a general indication of the standard of accommodation and may alter throughout the year due to a change of circumstance. These are our views and are not related to any other rating system. We recommend checking with your travel agent to find the accommodation that best suits your needs and budget.



Comfortable



Superior



Deluxe



Half rating



- ✈ INTERNATIONAL AIRPORT
- ✈ REGIONAL AIRPORT

TRAVEL TIPS

WHEN TO GO

Fiji enjoys a tropical climate all year round. Between the months of May and October, the humidity drops and it's the perfect time for swimming or lazing on white sandy beaches, exploring beneath the waves and discovering the jungle-clad inland. Divers and snorkellers will experience increased visibility around the coral reefs.

From November to April, known as the green season, the temperature and humidity start to climb. This time of the year is often characterised by afternoon showers that bring a welcome respite from the heat. Overall for those wanting a lazy beachside holiday, there is no wrong time to visit Fiji.

VISAS & PASSPORTS

All travellers to Fiji must carry a passport valid for at least six months beyond the date of departure from Australia. As visa information can change at any time, we recommend you seek advice regarding passports, visas and other travel requirements for the countries you intend visiting, from the Australian Government at smartrtraveller.gov.au.

TIME

Fiji is 2 hours ahead of Australian Eastern Standard Time (AEST). Daylight Saving Time is observed from November to January when clocks are turned forward by 1 hour.

ELECTRICITY

240V 50Hz. An adapter is not required.

CURRENCY

Fijian Dollar (FJD). ATMs are located in major urban areas. All major credit cards are widely accepted.

TIPPING & BARGAINING

Tipping is not encouraged in Fiji. Bargaining is generally not encouraged, however may be acceptable with some Indo-Fijian merchants.

LANGUAGE

English is the official language. Several Fijian dialects and Fijian Hindi are also widely spoken.

ETIQUETTE

Dress modestly when outside your hotel or resort and remove hats and sunglasses when visiting villages. Females should cover their knees and shoulders when visiting temples and villages.

GETTING AROUND

Take the time to explore and discover as you make your way around Fiji. The standard left hand rule applies to driving in Fiji. The maximum speed limit in villages and towns is 50km/h, with 80km/h along the highway and in less populated areas.

A current drivers licence from an English speaking country is required while drivers from other countries need an international driving permit.

Fiji is the perfect destination for a driving holiday. While driving distances are short, it is important to note that the winding roads can mean travel times are longer than anticipated.

Nadi to Coral Coast	85 km	1 hr 30 mins
Nadi to Pacific Harbour	144 km	2 hrs 30 mins
Nadi to Suva	190 km	3 hrs 20 mins
Nadi to Rakiraki	132 km	2 hrs 25 mins

TEMPERATURE & RAINFALL

Nadi	J	F	M	A	M	J	J	A	S	O	N	D
Temperature (max °C)	31	31	31	30	29	28	28	28	29	29	30	31
Average rainfall (mm)	299	302	324	163	78	62	46	58	77	103	138	159



PACIFIC OCEAN



Plantation Island Resort

EXPERIENCES YOU'LL LOVE

The best part of any journey is the experiences you have along the way, leaving you with memories to relive long after the holiday is over.

Fiji has countless amazing things to see and do. Here are five of our favourites to inspire your wanderlust.



Malamala Beach Club

HIP BEACH CLUBS

Get away from your resort for a change of scenery and head to a beach club for a memorable Fijian experience. Malamala Beach Club, the world's first beach club located on its own private island, offers crystal clear waters and white sand beaches and beachside cabanas to relax in while taking in the views across the Mamanucas. Hang out on Cloud 9, Fiji's first and original floating bar and pizzeria. Sip on cocktails, chill out and listen to a DJ spin tunes or swim and snorkel in the turquoise waters off the pontoon.



Bligh Waters, Suncoast

SNORKELLING AND DIVING

Fiji is known as the soft coral capital of the world and its warm, clear waters offer some of the best year round diving and snorkelling. Vibrant coral reefs surround Fiji's 333 islands and atolls. The Mamanuca and Yasawa Islands are great for viewing colourful coral and fish, while the diving off Rakiraki is one of Fiji's best kept secrets. The Northern Islands offer unparalleled snorkelling and diving access with Namena Marine Reserve a drawcard for its biodiverse waters and opportunities to swim with humpback whales.



Fire dance, Coral Coast

FIJIAN CULTURE

A village visit is a highlight of any Fijian holiday and provides a great insight into the traditional way of life. Be greeted by smiling children calling out 'bula', take part in a kava ceremony, sample authentic Fijian cuisine at a Lovo feast and marvel at the ancient ritual of firewalking. Watch a meke, from a graceful fan dance to a blood-curdling spear dance, it is a symbolic story told through song and dance. You can experience the culture at one of the many resort cultural nights or reserve a seat at Fiji Untold for the ultimate arts and culture experience.



Meke, Outrigger Fiji Beach Resort



The clear tropical waters, brilliant coral reefs and the amazing variety of marine life make the Fiji Islands a perfect spot for snorkelling and diving

ADVENTURE ACTIVITIES

In Fiji, many adventure experiences can be checked off even the most impressive bucket list. Pacific Harbour is Fiji's adventure capital and adrenalin junkies will love what's on offer, from thrilling jet boat rides and white water rafting to ziplining through lush rainforests and quad biking. For something a little more laid-back try your luck on a fishing charter. In the Yasawa Islands, dive with sharks or swim with the Manta ray. Experienced board riders won't want to pass up the chance to surf at the iconic Cloudbreak.

SMALL SHIP CRUISING

Go on a journey through paradise and discover the real Fiji. With over 300 tropical islands, a cruise is one of the best ways to explore the crystal waters, tropical atolls and striking volcanic outcrops. Cruising through Fiji is an experience of a lifetime, sail to uninhabited islands, anchor in private lagoons or spend countless hours lazing on golden beaches. Blue Lagoon and Captain Cook Cruises have small cruise ships that can negotiate reefs and remote islands with ease. Snorkel from the ship or go ashore and visit one of the local villages dotted throughout the islands.



Captain Cook Cruises

Tourism Fiji



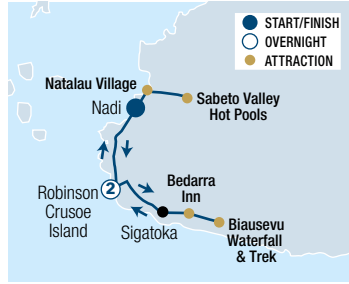
Sigatoka River Safari

Tourism Fiji



Blue Lagoon Cruises

ISLAND ADVENTURES



FEEJEE BEACH & CULTURE 2 NIGHTS

Gaze and be amazed while trekking through tropical flat jungle, snorkelling with marine life or posing by the largest coastal waterfall. Dip in the healing comfort of hot mud pools and be authenticated at native villages, municipal markets and participate in a Fijian kava ceremony. This one's for the restless heart!

INCLUDES

- 2 nights accommodation at Robinson Crusoe Island
- Continental breakfast at Robinson Crusoe Island
- Lunch on day 1 and day 3
- Village visit – interact with locals and kids
- Sabeto thermal springs and mud pools
- Sigatoka market visit
- Biausevu Waterfall
- Tour guide and driver

DEPARTS

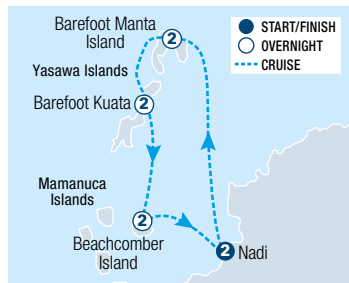
Wed and Sat from Nadi at 9am

CONCLUDES

Nadi at 6pm

	Adult twin share	Adult sole use
Guided Tour	\$970*[^]	\$1184*[^]

[^]Price includes compulsory meal plan and fee is payable direct to the resorts upon check-in.



SEA BREEZE ISLAND HOPPING 8 NIGHTS

Escape to the lush tropical islands of the Yasawas and Mamanucas in Fiji and discover the true meaning of paradise. Take your time discovering the crystal clear waters, white sandy beaches, stunning shores, and the colourful marine life of the underwater gardens.

INCLUDES

- 6 nights 2½ to 3 star accommodation on the islands
- Pre and post accommodation in Nadi
- All meals on the islands
- Breakfast at Nadi hotel
- Select resort activities
- Transfers between accommodation

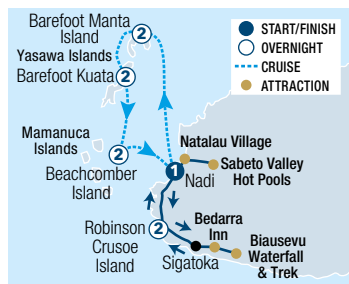
DEPARTS

Daily from Nadi – Arrive any time on day 1

CONCLUDES

Nadi at 6pm

	Adult twin share
Independent Tour	\$2858*[^]



FEEJEE FIVE 9 NIGHTS

Be spellbound on the island of Ratu Kini, the snorkelling haven of Barefoot Manta, Robinson Crusoe Island and Barefoot Kuata and add a truly authentic touch while swimming, snorkelling and swooning in Fiji's natural splendour and heritage for ten momentous days.

INCLUDES

- 9 nights 2½ to 3 star accommodation
- 2 breakfasts
- Lunch on day 1 and day 3
- Sabeto thermal springs & mud pools
- Sigatoka market visit
- Biausevu Waterfall
- Select resort activities
- Transfers between accommodation
- Tour guide and driver on the mainland

DEPARTS

Wed and Sat from Nadi at 9am

CONCLUDES

Nadi at 6pm

	Adult twin share	Adult sole use
Semi-guided Tour	\$2753*[^]	\$3788*[^]

[^]Price includes compulsory meal plans and fee is payable direct to the resorts upon check-in.

* FROM PRICES ARE A GUIDE ONLY, subject to change and availability and are in Australian Dollars. Prices are per person twin share, unless otherwise specified and based on the lowest room category and travel in low season. For full terms and conditions, refer to the Booking Conditions on the inside back cover of this brochure.



AVIS

Why not add Avis to your travel plans and make the most of your holiday by enjoying the flexibility and convenience that an Avis car rental provides. Avis Fiji is situated at five locations around Viti Levu and Vanua Levu, including a 24 hour service at Nadi International Airport. Offering a wide range of late model vehicles to choose from, all at great rates, renting with Avis is sure to make your holiday escape more enjoyable. All Avis vehicles are air-conditioned and come with 24 hour roadside assistance. Plus you get unlimited kilometres as well as free maps to help you find your destination.

Includes:

- Unlimited kilometres
- Loss Damage Waiver
- Taxes
- Administration fees
- All vehicles include air-conditioning

Does Not Include:

- Excess Reduction
- One way rental fees
- Stamp duty
- Concession Recovery Fee
- Delivery/collection fees for non-Avis locations
- Fuel
- Bond

Excess:

In the event of loss or damage, an Excess applies to all vehicles. Optional Excess Reduction can be purchased direct for an additional fee.

Based on per vehicle per day (24 hour hire period). Minimum age restrictions and age surcharges apply. A full driver's licence, credit card and security bond is required on collection. Tolls, fuel, additional driver and one way fees apply. An airport fee of FJD35 applies for all rentals picked up from Nadi Airport and Naisori Airport. Vehicles are subject to availability and a similar vehicle to those pictured may be substituted. Not all vehicles are available at all locations. Check with your travel agent for details.



- Overnight Bag
- Medium Suitcase
- Large Suitcase

TOYOTA YARIS (or similar)

GROUP B

- 4 door
- Auto
- 4 Cylinders
- 1,3 litre
- Radio/CD
- Driver's airbag



x4



1-2 DAYS	3-6 DAYS	7+ DAYS
-------------	-------------	------------

GROUP B **\$107*** **\$105*** **\$89***

TOYOTA CAMRY (or similar)

GROUP G

- 4 Door
- Auto
- 4 Cylinders
- 2,4 litre
- Radio/CD
- Power windows
- Remote/central locking
- Dual airbags
- Cruise control



x5



1-2 DAYS	3-6 DAYS	7+ DAYS
-------------	-------------	------------

GROUP G **\$138*** **\$135*** **\$113***

TOYOTA HIACE VAN (or similar)

GROUP P

- 4 Door
- Manual
- 4 Cylinders
- Radio
- Power windows
- Central locking
- Dual airbags



x8

Luggage capacity dependant on passenger numbers

1-2 DAYS	3-6 DAYS	7+ DAYS
-------------	-------------	------------

GROUP P **\$159*** **\$154*** **\$131***

TOYOTA RAV4 (or similar)

GROUP K

- 4WD
- 4 Door
- Auto
- 4 Cylinders
- 2 litre
- Radio/CD
- Power steering
- Dual airbags



x5



1-2 DAYS	3-6 DAYS	7+ DAYS
-------------	-------------	------------

GROUP K **\$171*** **\$164*** **\$141***

TOYOTA HILUX STANDARD (or similar)

GROUP L

- 4 Door
- Manual
- 4 Cylinders
- 2,4 litre
- Radio/CD
- Power steering
- Dual airbags



x5

Luggage capacity dependant on passenger numbers

1-2 DAYS	3-6 DAYS	7+ DAYS
-------------	-------------	------------

GROUP L **\$191*** **\$185*** **\$150***

TOYOTA HILUX DUAL CAB (or similar)

GROUP D

- 4WD
- 4 Door
- Auto
- 4 Cylinders
- 2,8 litre
- Radio/CD
- Power steering
- Dual airbags



x5

Luggage capacity dependant on passenger numbers

1-2 DAYS	3-6 DAYS	7+ DAYS
-------------	-------------	------------

GROUP D **\$227*** **\$221*** **\$187***

TOYOTA FORTUNER (or similar)

GROUP H

- 4WD
- 5 Door
- Auto
- 4 Cylinders
- 3 litre turbo diesel
- Radio/CD
- Remote/central locking



x5



1-2 DAYS	3-6 DAYS	7+ DAYS
-------------	-------------	------------

GROUP H **\$269*** **\$260*** **\$234***

TOYOTA PRADO (or similar)

GROUP Z

- 5 Door
- Auto
- 4 Cylinders
- 3 litre
- Radio/CD
- Power steering
- Dual airbags



x5



No luggage capacity with 7 passengers

1-2 DAYS	3-6 DAYS	7+ DAYS
-------------	-------------	------------

GROUP Z **\$297*** **\$287*** **\$261***

TRANSFERS



AIRPORT TRANSFERS

Get your holiday off to a great start with a door to door shared coach transfer or arrive in style by private vehicle. Operating from Nadi Airport 24 hours a day, 7 days a week, Tourist Transport Fiji will ensure you are transferred to your hotel in air-conditioned comfort. All transfers include a personal meet and greet service with a traditional Fijian welcome and bottled water. Vehicles range from modern coaches to four seat private vehicles, 4WDs and mini vans. There is also a fleet of wheelchair accessible vehicles available for the mobility impaired.

So sit back, relax and enjoy the passing scenery.

	SHARE COACH		PRIVATE VEHICLE	
	Per Person	Per Person	Per Vehicle	Per Vehicle
	Adult	Child 2-12 yrs	1 to 3 People	4 to 6 People
Nadi Town/Wailoaloa Beach	\$28* [^]	\$14* [^]	\$72* [^]	\$98* [^]
Denarau	\$41* [^]	\$21* [^]	\$100* [^]	\$125* [^]
DoubleTree by Hilton	\$54* [^]	\$27* [^]	\$116* [^]	\$139* [^]
Vuda Marina/First Landing/Anchorage	\$55* [^]	\$28* [^]	\$117* [^]	\$139* [^]
InterContinental ⁺ /Shangri-La Yanuca Island/Natadola Beach ⁺	\$65* [^]	\$33* [^]	\$246* [^]	\$287* [^]
Outrigger Fiji/Bedarra Inn	\$69* [^]	\$35* [^]	\$271* [^]	\$314* [^]
Fiji Hideaway/Naviti/Tambua Sands/Warwick	\$76* [^]	\$38* [^]	\$302* [^]	\$360* [^]
Crusoes Retreat	N/A	N/A	\$394* [^]	N/A
Pacific Harbour ⁺	\$136* [^]	\$68* [^]	\$418* [^]	\$474* [^]
Rakiraki ⁺ /Volivoli Beach ⁺	\$155* [^]	\$78* [^]	\$418* [^]	\$474* [^]
Suva via Queens Highway	N/A	N/A	\$497* [^]	\$589* [^]

[^]Price is based on one way to/from Nadi Airport. ⁺Minimum 2 adults for Share Coach transfers. Prices to other destinations and larger vehicles also available.

BULA! WELCOME TO FIJI.

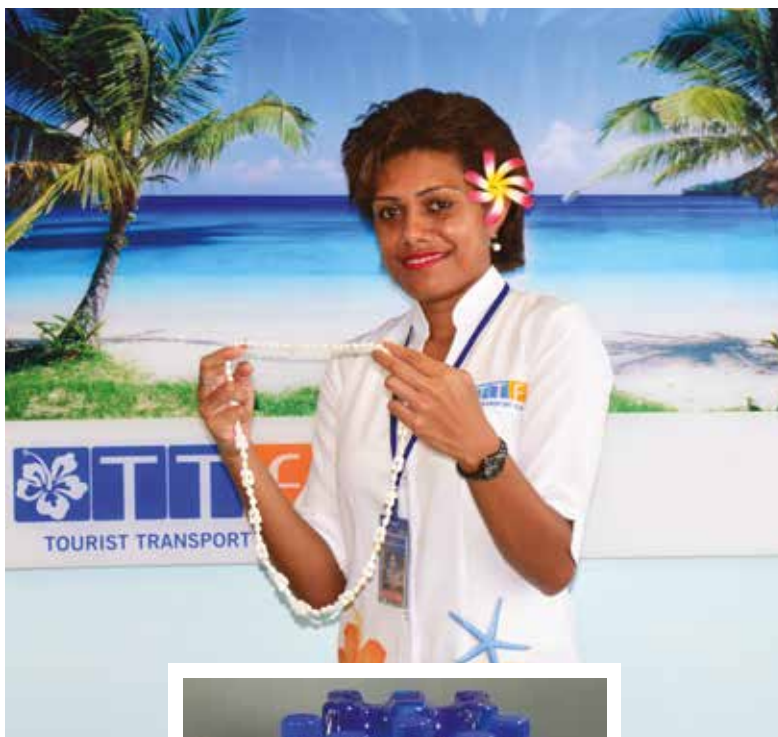
Our **EXCLUSIVE** meet and greet service will ensure your holiday gets off to a great start, with a warm Fijian welcome from someone who really knows the destination.

Just book one of our shared coach or private vehicle transfer options and on arrival in Fiji, make your way to the Airport Arrivals Office – it's open every day, 24 hours a day. There you'll find a friendly staff member to greet you with one of those famous Fijian smiles, check your travel arrangements and transfer you to your accommodation in air-conditioned comfort.

With our exclusive Meet & Greet Service, you'll receive:

- A traditional Fijian welcome with a **shell lei**
- Bottle of **Fiji water**

A warm welcome and a wonderful Fijian holiday awaits!





MALOLO CAT

Malolo Cat offers four scheduled launch transfers daily between Port Denarau and Malolo Lailai Island. Get off to a great start by cruising 50 minutes across the beautiful Fiji waters in comfort. The service includes a scheduled coach transfer from Nadi Airport, Nadi or Denarau accommodation to Port Denarau.

Private 24 hour transfers to/from Port Denarau also available.

	Adult	Child 2-11 yrs
Plantation Island Resort/ Lomani Island Resort/ Musket Cove	\$79* [^]	\$40* [^]

[^]Price based on per person one way to/from Nadi Airport, Nadi, Denarau accommodation and Port Denarau.



24 HOUR WATER TAXI SERVICE

Mamanuca Express offers a comfortable 24 hour water taxi service between Port Denarau and all resorts throughout the stunning Mamanuca and lower Yasawa Islands in Fiji. This express speedboat transfers are perfect for flights that arrive outside of scheduled ferry service departures.

Prices for private transfers 5 people and above, shared transfers and inter-island transfers are also available.

	1 to 4 people
Treasure Island/Beachcomber Island/ Serenity Island	\$515* [^]
Castaway Island/Malolo Island/ Tropica Island Resort/Likuliku Lagoon Resort/Plantation Island Resort/ Musket Cove/Lomani Resort	\$735* [^]
Mana Island/Tokoriki Island/ Matamanoa Island/Vomo Island	\$886* [^]

[^]Price based on per boat one way to/from Port Denarau.

SOUTH SEA CRUISES

South Sea Cruises offer seamless, fast transfers to the Mamanuca and Yasawa Island resorts. Scheduled transfers operate from Port Denarau several times a day, every day.

Modern catamarans with multiple lounges, outer viewing decks and fully licensed bars, mean you'll feel like you're on holiday before you even reach your destination.

Resort connections direct from Nadi Airport to Port Denarau are also available (extra charge). A courtesy coach pick-up is available from selected Nadi area, Wailoaloa area and Denarau accommodation to Port Denarau.

Prices from Nadi Airport and Captains Lounge with complimentary drinks and snacks is also available.

	Adult	Child 2-15 yrs
Treasure Island/ Beachcomber Island	\$102* [^]	\$66* [^]
Malolo Island/Castaway Island	\$109* [^]	\$71* [^]
Likuliku Lagoon Resort/ Tropica Island Resort	\$109* [^]	N/A
Mana Island	\$123* [^]	\$80* [^]
Tokoriki Island	\$137* [^]	\$89* [^]
Matamanoa Island	\$137* [^]	N/A
Vomo Island	\$165* [^]	\$107* [^]
Barefoot Kuata/Waya Lailai/ Naqalia	\$137* [^]	\$89* [^]
Octopus	\$140* [^]	\$92* [^]
Mantaray/Barefoot Manta/ Paradise Cove/Korovou/ White Sandy Beach	\$147* [^]	\$96* [^]
Navutu Stars/Long Beach/ Coral View/Coconut Beach/ Nanuya/Gold Coast/ Qarsmans/Blue Lagoon/ Nabua	\$161* [^]	\$104* [^]

[^]Price based on per person one way to/from Port Denarau and selected Denarau hotels.



FAST BOAT TRANSFERS

SeaFiji has built a strong reputation for its 24 hour fast boat transfer services between Port Denarau and the Mamanuca Islands. All vessels are fast, comfortable, fully licensed, purpose built craft powered by the latest technology engines and navigational systems. The connections let you maximise your time on the island and minimise travelling time.

Prices for private transfers 5 people and above, shared transfers and inter-island transfers are also available. A fuel surcharge per person is payable direct and varies per transfer region.

	1 to 4 People
Treasure Island/Beachcomber Island/ Serenity Island	\$456* [^]
Musket Cove/Plantation Island/ Lomani Resort/Tropica Island Resort/ Malolo Island/Likuliku Lagoon Resort/ Castaway Island/Mana Island	\$644* [^]
Matamanoa Island/Tokoriki Island/ Vomo Island	\$791* [^]

[^]Price based on per boat one way to/from Port Denarau.

TRANSFERS



HELICOPTER TRANSFERS

Fiji's premium helicopter and charter airline service specialises in efficient and reliable air transfers throughout Fiji. The Resort Express Service meets and greets all passengers and transfers guests to a private lounge offering complimentary cold beverages and Wi-Fi.

15kg baggage allowance per person. Other transfer locations also available.

	Adult
Treasure Island/Anchorage/First Landing	\$499* [^]
Plantation/Lomani/Musket Cove/DoubleTree by Hilton	\$555* [^]
Vomo Island/Tokoriki Island/Mana/Castaway/Likuliku/Tropica	\$597* [^]
Intercontinental/Shangri-La	\$597* [^]

[^]Price based on per person one way, minimum 2 adults from Nadi Airport.



SEAPLANE TRANSFERS

Pacific Island Air flies direct from Nadi Airport to the Fijian island resorts.

20kg baggage allowance per person. Inter-island transfers prices also available.

	Adult	Child 2-12 yrs
Castaway Island/Musket Cove/Malolo Island/Plantation Island	\$411* [^]	\$288* [^]
Likuliku Island Resort/Lomani/Tropica Island Resort	\$411* [^]	N/A
Vomo Island	\$422* [^]	\$296* [^]
Mantaray Island Resort/Octopus Island Resort/Paradise Cove	\$493* [^]	\$493* [^]
Nanuya Island Resort/Blue Lagoon Beach Resort	\$534* [^]	\$534* [^]

[^]Price based on per person one way from Nadi Airport. Minimum 2 adults on scheduled service to Mamanuca Islands. Minimum 4 adults on service to Yasawa Islands.



HELICOPTER TRANSFERS

Pacific Island Air offers fast, efficient and reliable helicopter transfers to most resorts and islands in Fiji.

15kg baggage allowance per person. Inter-island transfers and other location prices also available.

	Adult	Child 2-12 yrs
Castaway Island/Musket Cove/Plantation Island/Treasure Island	\$493* [^]	\$345* [^]
Likuliku Island Resort/Lomani/Tropica Island Resort	\$493* [^]	N/A
Mana Island/Vomo Island/Tokoriki Island	\$534* [^]	\$374* [^]
Barefoot Manta/Barefoot Kuata/Mantaray	\$589* [^]	\$589* [^]

[^]Price based on per person one way from Nadi Airport. Minimum 2 adults on scheduled service to Mamanuca Islands. Minimum 4 adults on service to Yasawa Islands.



EXPLORE THE REAL FIJI

Great Sight's Fiji offers a wide range of half day and full day tours that connect you with the rich culture and diverse scenery that Fiji is famous for. With a professional team of Drivers and Guides, Great Sight's Fiji ensures that you will have a memorable and authentic local experience.

For more information see the Great Sight's Fiji tours including 'Discover Nadi', 'Great Taste of Fiji', 'Thermal Mud Pool & Garden', 'Valley of a Thousand Hills', 'Coral Coast Heritage Tour' and 'Thermal Mud Pool Morning Tour' on page 15.





DISCOVER NADI

Explore the Garden of the Sleeping Giant, famous for its collection of orchids. Visit the chiefly village of Viseisei, the legendary landing site of the first Fijians. Continue into Nadi to the site of the largest Hindu temple in the South Pacific. Lastly, take in the colourful sights and friendly faces at the Nadi Market.

Includes:

- Garden of the Sleeping Giant tour
- Viseisei Village tour
- Nadi town and markets
- Sri Siva Subramaniya Swami Temple
- Expert guide
- Return transfers from Nadi and Denarau accommodation

Duration: 4 hours

Departs: Mon to Sat from Nadi at 8am

	Adult	Child 2-12 yrs
Half Day Tour	\$119*	\$80*



GREAT TASTE OF FIJI

Step back in time on this safari exploration. Start with a visit to the picturesque and peaceful village of Sikituru located in the heart of Nadi. On arrival be welcomed with a 'Sevusevu' or Kava ceremony. Get a taste of Fijian food by participating in the preparation, cooking and tasting of meals. Learn about village life with an optional walk to the preschool and village gardens, then end the day with the sight of Nadi temple and a stop in Nadi town for shopping.

Includes:

- Kava ceremony • Food tasting
- Sight of Hindu temple and shopping
- Transport by air-conditioned vehicle
- Return transfers from Nadi and Denarau accommodation

Duration: 4 hours

Departs: Mon to Fri from Nadi and Denarau Resorts at 9:30am

	Adult	Child 2-12 yrs
Half Day Tour	\$109*	\$55*



THERMAL MUD POOL & GARDEN

Explore the Garden of the Sleeping Giant, famous for its collection of orchids and tropical plants. Your next stop is the Thermal Springs and Mud Pools, an array of natural pools to soothe your bones and cleanse the skin. On the return, stop roadside and sample tropical fruit or a cold coconut.

Includes:

- Garden of the Sleeping Giant tour
- Thermal Springs and Mud Pools
- Sabeto Valley surrounds
- Transport by air-conditioned vehicle
- Return transfers from Nadi and Denarau accommodation

Duration: 3 hours

Departs: Mon to Sun from Nadi

	Adult	Child 2-12 yrs
Half Day Tour	\$139*	\$70*



VALLEY OF A THOUSAND HILLS

Travel by 4WD up into the Nausori highlands. Take in the amazing views of the rural landscape to the many islands stretching out from Nadi Bay. Visit the summit and take in the beauty of Viti Levu with uninterrupted views of the Mamanuca Island groups on the seaward side, and 'the valley of a thousand hills' inland. Lastly, visit the largest Hindu Temple in the South Pacific and the colourful Nadi market. This tour offers a mixture of adventure, exploration and culture.

Includes:

- Valley of the thousand hills, Nadi markets and Hindu temple • Transport by air-conditioned 4WD vehicle
- Seasonal fruits and Fiji water
- Return transfers from Nadi and Denarau accommodation

Duration: 3 hours

Departs: Mon to Sat from Nadi and Denarau Resorts at 9am

	Adult	Child 2-12 yrs
Half Day Tour	\$105*	\$53*



CORAL COAST HERITAGE TOUR

Explore one of Fiji's most famous tourist regions - the Coral Coast. Renowned for its amazing shoreline, the Coral Coast has plenty to offer and this tour covers all the highlights. Take in the amazing view over the Mamanuca Island Group from the World War II Momi Battery. Visit Lomawai Village – the home of salt making. Finish off the day with a short 20 minute walk in the rainforest to Biausevu Waterfall.

Includes:

- World War II Momi Battery, Lomanwai Village, Biausevu Waterfall • Experienced driver/guide
- Transport by air-conditioned vehicle
- Lunch at Bedarra Beach Resort
- Return transfers from Nadi and Denarau accommodation

Duration: 8 hours

Departs: Mon to Sat from Nadi at 8am

	Adult	Child 2-12 yrs
Full Day Tour	\$280*	\$140*



THERMAL MUD POOL MORNING TOUR

This tour begins with a scenic half hour drive into the heart of the Sabeto Valley. Enjoy the famous thermal springs & mud pools, an array of natural pools to soothe your bones and cleanse the skin. Enjoy an optional massage to relax your body. Stop by the side of the road on return for some tropical fruit or a cold coconut to finish off your day.

Includes:

- Modern air-conditioned vehicle with driver/guide
- Sabeto Valley surrounds
- Thermal Springs and mud pools
- Fiji water refreshments
- Full body massage (at own cost)

Duration: 2 – 3 hours

Departs: Mon to Sun from Denarau and Martintar Hotels at 9:15am

	Adult	Child 2-12 yrs
Half Day Tour	\$81*	\$41*

TOURS



IBIKE FIJI EXPERIENCE

iBike Fiji offers guided e-bike tours in the foothills of Nadi. This half-day experience is ideal for visitors wanting to explore the beauty of Fiji's interior up close and personal. In the company of two local, competent guides learn about the area's rich history and interact with locals, all while pedalling through paradise. Along the way our local guides share stories about the culture and we'll stop for a refreshing coconut and stunning views. Sunset touring is available on request.

Includes:

- Trip leader and local guide
- Use of E-Bike and helmet • Local refreshments
- Hotel pick up and drop off from Denarau and Nadi hotels
- Minimum 2 people, maximum 8 people

Duration: 4 hours with approximately 2 hours of cycling

Departs: Daily, Morning Tour 8am – 12pm

Minimum age is 16 yrs.

	Adult/Child
iBike Fiji	\$154*



SIGATOKA RIVER SAFARI

Experience the natural beauty of the Sigatoka River on this uniquely Fijian adventure. On board a custom built safari jet boat, travel to authentic Fijian villages and experience a day in the life of the real 'kaiviti' (Fijian) and participate in a traditional kava ceremony.

Includes:

- 40 minute safari jet boat cruise
- Kava ceremony
- Safari sulu (sarong) for women
- Tropical Fijian lunch
- Return transfers from selected Coral Coast accommodation

Duration: 4 hours 30 minutes

Departs: Mon to Sat from Sigatoka Town at 8:45am

Other Tour Options:

Tour from Nadi/Denarau **\$268*** per adult, **\$135*** per child, Self Drive **\$223*** per adult, **\$112*** per child.

	Adult	Child 4-15 yrs
Half Day Tour	\$253*	\$127*



FIJI UNTOLD

Be part of an enriching traditional performance with a contemporary twist told through song and dance. The FIJI UNTOLD show will captivate your senses with its Energy! Spirit! Mana! The journey begins with an enticing performance that will awaken your senses and lead you into a state-of-the-art Big Top where you leave with a deeper understanding of Fiji's myths and legends.

Includes:

- World class Broadway style performance and captivating dances
- Return transfers from Nadi and Denarau accommodation

Duration: 3 hours

Departs: Thu and Sun from Nadi at 7pm

	Adult	Child 2-12 yrs
Cultural Show	\$100*	\$63*



GO DIRTY QUAD BIKE TOUR

Take a quick ride up Nadi's back road, past the biggest Hindu Temple in the South Pacific and then it's time for the off roading adventure to begin. Splash through mud puddles (a seasonal offering), zip by cane fields, and ride higher up the pine forest mountainside before stopping on a mountain plateau overlooking the Mamanuca Islands. Winding tracks take you back to the main road through Nadi town. Enjoy a short ride along our local beach before heading back to base.

Includes:

- Safety Gear • Local Tour Guide
- Snack & Refreshments • Free tour photos
- Transfers from Denarau & Nadi Airport region hotels if required

Duration: 2 – 3 hours

Departs: Daily from Nadi at 6:30am, 9:15am, 1:15pm, 4:15pm

Children aged 5-17 yrs must be accompanied by parent/guardian.

	Adult	Child 5-17 yrs
Half Day Tour	\$261*	\$156*



ZIPLINE TOUR

ZipFiji is an amazing adventure with five kilometres of zip lines woven into a truly spectacular setting of incredible caves, canyons and breathtaking ocean views. Highly trained guides instruct how to use special equipment and techniques to experience 16 jaw dropping zip lines. This amazing adventure lets you fly higher, faster and longer than ever before on this world-class zip line.

Includes:

- 16 zip lines
- Safety equipment
- Light refreshments
- Return transfers from Nadi accommodation

Duration: 3 hours

Departs: Daily from Nadi at 9am, 2pm

Children aged 3-12 yrs must be accompanied by parent/guardian.

	Adult/Child
Half Day Tour	\$172*



CLOUD 9 DAY TRIP

Cloud 9 is Fiji's first and original two level floating platform with an internationally stocked bar and Italian wood-fired pizzeria, surrounded by turquoise blue water and picturesque views. Cloud 9 is laid-back and naturally classy, with a fun atmosphere, sun deck, day beds and a surround sound system throughout to create the perfect soundtrack for a magical day.

Includes:

- FJD60 food and beverage credit
- Return boat transfer from Port Denarau to Cloud 9
- Return transfers from Denarau & Nadi hotels, DoubleTree by Hilton Sonaisali

Duration: 5 hours

Departs: Daily from Port Denarau at 9am and 1pm

Not suitable for children under 10 yrs.

	Adult	Child 10-15 yrs
Half Day Tour	\$150*	\$135*



MALAMALA BEACH CLUB

Malamala Beach Club boasts white sand beaches, 2 resort-style infinity edge pools and views across the stunning Mamanuca Islands. Only 25 minutes from Port Denarau by high-speed catamaran, guests are invited to sit back and relax in the club-like atmosphere.

Includes:

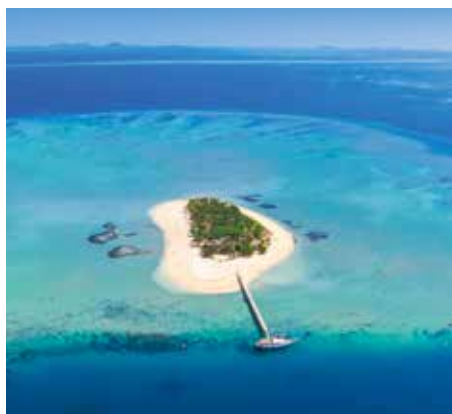
- Free use of towels (one per person)
- Free Wi-Fi
- Return vessel transfers from Port Denarau
- Return coach transfers from Nadi, Denarau, Vuda and Coral Coast accommodation

Duration: 6 – 7 hours

Departs: Daily from Port Denarau at 9:30am, Coral Coast from 10am

Returnee and Cabana prices also available.

	Adult/Child
Day Pass	\$141*
Day Pass with Poolside Day Bed	\$205*



TIVUA PRIVATE ISLAND DAY SAIL

Set sail to Tivua Private Island for a day of adventure aboard Ra Marama, a historic Brigantine rig tall ship. Explore coral gardens, enjoy a guided snorkelling tour or glass bottom boat tour.

Includes:

- Cruise to Tivua Private Island
- Fijian cultural entertainment
- Use of canoes and stand-up paddle boards
- Morning and afternoon tea
- Barbecue lunch
- Beer, wine and soft drink while on the island
- Return transfers from selected Nadi and Denarau accommodation

Duration: 7 hours

Departs: Daily from Port Denarau at 10am

Transfers from the Coral Coast accommodation also available.

	Adult	Child 3-15 yrs
Full Day Tour	\$188*	\$118*



TIVUA PRIVATE PARADISE

Enjoy a deluxe half day island experience on Tivua Island and relish the vast expanse of uncrowded aqua-blue water and white sand as you swim, snorkel, paddle or simply relax in your own private cabana.

Includes:

- Welcome glass of Champagne
- Light brunch with a small bottle of Champagne
- Glass bottom boat tour with Marine Biologist
- Return high speed boat transfers from Port Denarau

Duration: 3 hours 30 minutes

Departs: Wed, Fri to Sun from Port Denarau at 8am

Minimum of 15 passengers required for tour to operate.

	Adult	Child 3-15 yrs
Morning Tour	\$371*	\$297*



SOUTH SEA SAILING

Sail around the idyllic Mamanuca Islands on a unique sailing catamaran and visit uninhabited sand cays and untouched coral reefs abundant with marine life. Each journey offers a unique sailing experience dependent on the warm tropical breezes and sea conditions.

Includes:

- Welcome mimosa or sparkling wine
- Morning tea
- Gourmet buffet lunch with beer and wine (for 2 hours)
- Unlimited non-alcoholic beverages
- Use of snorkelling equipment
- Return coach transfers from Nadi, Denarau, Vuda and Coral Coast accommodation

Duration: 7 hours

Departs: Daily from Port Denarau at 9:45am, Coral Coast from 7:10am

Children under 8 yrs not permitted on cruise.

	Adult	Child 8-15 yrs
Full Day Tour	\$193*	\$101*



SOUTH SEA ISLAND DAY TRIP

Discover Fiji's most popular day trip destination. Explore the crystal clear waters teeming with magnificent coral and fish life surrounding this pretty island, just 30 minutes from Port Denarau.

Includes:

- Full day on South Sea Island
- Barbecue lunch
- Beer, wine and soft drinks on the island
- Use of non-motorised watersports
- Return launch transfers
- Return transfers from selected Nadi, Denarau, Vuda and Coral Coast accommodation

Duration: 7 – 8 hours

Departs: Daily from Port Denarau at 10am, Coral Coast accommodation from 7:25am

Half day, Finding Nemo and Combo cruise prices also available.

	Adult	Child 5-15 yrs
Full Day Tour	\$193*	\$101*



SUNSET DINNER CRUISE

Cruise around the stunning bay on Fiji One into a beautiful Pacific Island sunset. Enjoy a delicious barbecue dinner of fish, steak and chicken served with salads, followed by dessert. Fijian cultural entertainment and spectacular scenery round off a perfect evening on the water.

Includes:

- Fijian cultural entertainment
- Welcome drink
- Tropical buffet dinner
- Return transfers from Nadi and Denarau accommodation

Duration: 3 hours

Departs: From Port Denarau, Tue to Sun at 5pm (May – Sep), Tue to Sun at 5:30pm (Oct – Apr)

	Adult	Child 3-15 yrs
Dinner Cruise	\$132*	\$76*

*FROM PRICES ARE A GUIDE ONLY, subject to change and availability and are in Australian Dollars. Prices are per person, unless otherwise specified and based on travel in low season. For full terms and conditions, refer to the Booking Conditions on the inside back cover of this brochure.

NADI & SURROUNDS

Nadi is the gateway to the spectacular island and coastal regions of Fiji. Visit local shops and markets or Fiji's second largest city, Lautoka.

SEE

- Visit the Sri Siva Subramaniya Temple in Nadi Town
- See the impressive orchid collection at the Garden of the Sleeping Giant

DO

- Browse the local markets, including the Nadi Produce and Handicraft Markets
- Indulge in a therapeutic thermal mud spa at the Sabeto Thermal Mud Pool and Hot Springs

EAT & DRINK

- Sample Indo-Fijian food at one of Nadi's curry houses

WHAT'S ON

Bula Festival

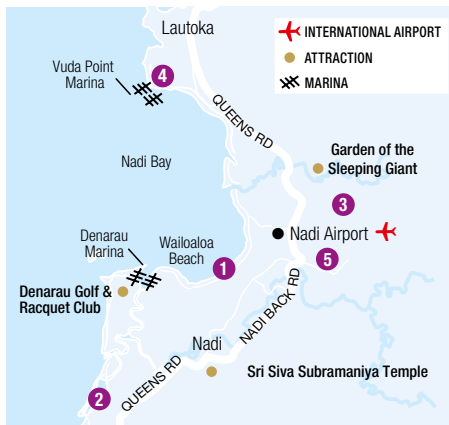
July or August (dates to be confirmed)

Sugar Festival, Lautoka

September (dates to be confirmed)

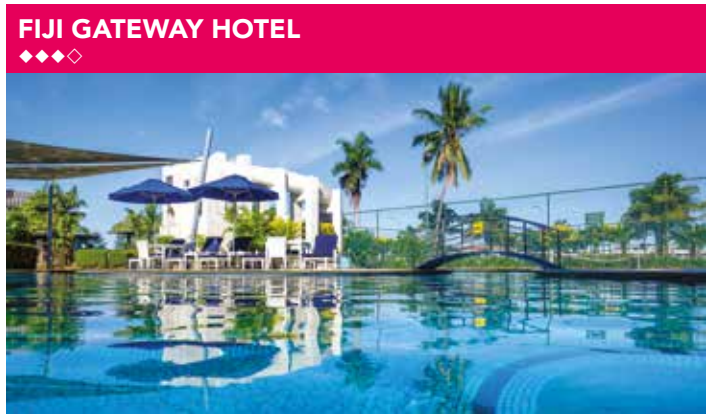


Sri Siva Subramaniya Temple



Nadi Market

REF.	HOTELS	PAGE
1	Crowne Plaza Fiji Nadi Bay Resort & Spa	20
2	DoubleTree Resort by Hilton Fiji – Sonaisali Island	19
3	Fiji Gateway Hotel	18
4	First Landing Beach Resort and Villas	18
5	Novotel Nadi	19
5	Tanoa International Hotel	19



Queens Road, Nadi Airport
MAP PAGE 18

From **\$247***

- ❖ Recently refurbished, iconic hotel located opposite the airport
- ❖ Two pools and a tennis court with free use of racquets and balls
- ❖ Palm Court Restaurant open for breakfast, lunch and dinner

Location: Situated opposite Nadi International Airport and eight kilometres from Nadi Town. Distances: Beach 8km, Nadi Airport 500m.

Getting There: Free return transfers from Nadi Airport.

Property Features: Free Wi-Fi (common areas), Pools (2), Spa, Restaurant, Café, Bar, 24 hour room service, Gym, Tennis court, Waterslide, Resort shop, Parking (free), 95 rooms.

Room Features: Wi-Fi (extra charge), Air-conditioning, Tea/coffee making facilities, In-room movies (free), Cable TV, Hair dryer.

Max Capacity: Deluxe/Pool View – 3, Deluxe Family – 5, Suite – 2.



Vuda Point, via Lautoka
MAP PAGE 18

From **\$374***

- ❖ Families will love the Nalamu Nipper Kids Club and kids' meals available
- ❖ Admire spectacular sunsets daily from the resort
- ❖ Watch a movie under the stars at the open air cinema

Includes light breakfast daily and welcome fruit drink on arrival.

Location: Set on the white sands of Nalamu Beach at Vudu Point. Distances: Beachfront, Nadi Airport 15km.

Getting There: We recommend airport transfers be booked in conjunction with your accommodation. See page 14 for further details.

Property Features: Free Wi-Fi (common areas), Pool, Restaurant, Café, Bar, Room service, Day spa, Kids club 3-14 years (free), 34 rooms.

Room Features: Air-conditioning, Fan, Balcony or terrace, Tea/coffee making facilities, Kitchen (Garden Villa 2 Bedroom, Beach Villa 2 Bedroom, Royal Beachfront Villa, Nalamu Grand Beach Villa), Cable TV (Deluxe Garden Bure and Villas), Hair dryer, Safe.

Max Capacity: Garden Bure/Deluxe Garden Bure/Ocean Spa Bure/1 Bedroom Garden Villa – 3 adults or 2 adults/2 children. Other room types also available.



* FROM PRICES ARE A GUIDE ONLY, subject to change and availability and are in Australian Dollars. Prices are per room per night for 2 people, unless otherwise specified and based on the lowest room category for travel in low season. For full terms and conditions, refer to the Booking Conditions on the inside back cover of this brochure.

NADI & SURROUNDS ACCOMMODATION

TANOA INTERNATIONAL HOTEL



Superior

Votualevu Road, Nadi Airport
MAP PAGE 18

From **\$313***

- ❖ Five dining options including the 24 hour Garden Court Restaurant
- ❖ Two floodlit tennis courts
- ❖ Nightly entertainment in the Bula Bar

Includes full breakfast daily.

Location: Located three minutes from Nadi International Airport and a 15 minute drive to Nadi's main shopping centre. Distances: Beach 15km, Nadi Airport 3km.

Getting There: Free return transfers from Nadi Airport.

Property Features: Pool, Restaurants (3), Bar, Day spa, Gym, Tennis court (floodlit), Resort shop, Guest laundry, 24 hour reception, Parking (free), 148 rooms.

Room Features: Air-conditioning, Balcony or patio, Tea/coffee making facilities, Ironing facilities, Hair dryer, Safe.

Max Capacity: Superior/Family – 3 adults or 2 adults/2 children, Executive – 2.



FREE

NOVOTEL NADI



Superior Room 1 Queen & 1 single bed

Votualevu Rd, Nadi, Fiji
MAP PAGE 18

From **\$282***

- ❖ Set in 42 acres of tropical gardens
- ❖ Nine hole par three golf course on-site
- ❖ All rooms feature a private balcony or patio overlooking the golf course

Includes light breakfast daily.

Location: Located close to Nadi Airport and a 15 minute drive to Port Denarau. Distances: Beach 5km, Nadi Airport 2km.

Getting There: Free return transfers from Nadi Airport.

Property Features: Pool, Golf course (9 hole), Restaurant, Room service, Bar, Gym, Tennis court, Golf course (9 hole), Day Spa, 24 hour reception, Dry cleaning service, Parking (free), 127 rooms.

Room Features: Air conditioning, Mini bar, Tea/coffee making facilities, Refrigerator, Cable TV, Ironing facilities, Hair dryer, Safe.

Max Capacity: Deluxe Room 2 Queen beds – 3 adults/2 children or 2 adults/3 children, Superior Room 1 Queen & 1 single bed – 3 adults, or 2 adults/1 child. Other room types also available.



FREE



DOUBLETREE RESORT BY HILTON FIJI – SONAISALI ISLAND



Beachfront Guestroom

Naisali Island, Sonaisali
MAP PAGE 18

From **\$355***

- ❖ Beachfront resort
- ❖ Family friendly resort with kid's club and children's playground
- ❖ Signature Sweet Dreams by DoubleTree bedding in all rooms

Includes full breakfast daily.

Location: A three minute boat ride from the main island of Viti Levu and a 25 minute drive from Nadi International Airport. Distances: Beachfront, Nadi Airport 20km.

Getting There: We recommend airport transfers be booked in conjunction with your accommodation. See page 12 for further details.

Property Features: Free Wi-Fi (common areas), Pool, Restaurants (2), Bars (3), Day Spa, 24 hour room service, Kids club 3-12 years (free), 120 rooms.

Room Features: Wi-Fi (extra charge), Air-conditioning, Balcony or terrace, Refrigerator, Tea/coffee making facilities, Smart TV, Cable TV, Ironing facilities, All rooms non smoking.

Max Capacity: Beachfront Guestroom – 2 adults/2 children, Beachfront Bure/Ocean View Bure – 3, Double King Beachfront Bure/Ocean View Bure – 4 adults or 2 adults/ 2 children.



*FROM PRICES ARE A GUIDE ONLY, subject to change and availability and are in Australian Dollars. Prices are per room per night for 2 people, unless otherwise specified and based on the lowest room category for travel in low season. For full terms and conditions, refer to the Booking Conditions on the inside back cover of this brochure.

NADI & SURROUNDS ACCOMMODATION

CROWNE PLAZA FIJI NADI BAY RESORT & SPA



Wailoaloa Beach, Nadi Bay
MAP PAGE 18

From **\$425***

- ❖ Brand new beachfront resort and spa located on picturesque Wailoaloa Beach
- ❖ 7 swimming pools, and the beachfront pool with a Breeze Swim Up Bar
- ❖ Select rooms have direct beach and pool access
- ❖ Excellent for families with kids with the option of 2 Bedroom Suites and King Junior Suites with direct pool access
- ❖ 10 food & beverage outlets, including the Urban Sugar Beach Club

Includes full breakfast daily.

Location: Wailoaloa beachfront location on a 1 kilometre public beach, approximately a 15 minute drive from Nadi Airport and Denarau Island. Distances: Beachfront, Nadi Airport 9km.

Getting There: We recommend airport transfers be booked in conjunction with your accommodation. See page 12 for further details.

Property Features: Pools (3 – including adults only), Restaurants (4), Bars (3 – including swim-up), Day spa, Gym, Beach club, Kids and Teens club, Shops, Watersports, 324 rooms.

Room Features: Air-conditioning, Balcony or patio, Tea/coffee making facilities, TV, Hair dryer, Safe.

Max Capacity: 2 Bedroom Family Suite – 2 adults/2 children, 2 Bedroom Suite – 4 adults or 2 adults/2 children, 1 Bedroom King Suite/1 King Junior Suite – 2 adults/1 child. Other room types also available.



1 King Junior Suite



*** FROM PRICES ARE A GUIDE ONLY**, subject to change and availability and are in Australian Dollars. Prices are per room per night for 2 people, unless otherwise specified and based on the lowest room category for travel in low season. For full terms and conditions, refer to the Booking Conditions on the inside back cover of this brochure.



Sofitel Fiji Resort & Spa



DENARAU ISLAND

A short drive from Nadi, Denarau Island is easily accessible by a causeway separating the island from Viti Levu. Cruise ships sail into the picturesque harbour while tall ships whisk guests away to the nearby Mamanuca and Yasawa Islands for swimming and snorkelling.

SEE

- See colourful coral and tropical fish in the cool blue waters on a day tour to South Sea Island or Castaway Island
- Watch the vivid colours of a Fiji sunset from Denarau Beach

DO

- Play a round of golf at Denarau Golf and Racquet Club
- Beat the heat and enjoy the thrills of the giant waterslides at Big Bula Waterpark

EAT & DRINK

- Head to Port Denarau institution, Cardo's Steakhouse and wind down in the evening with cold drinks and delicious steak and seafood

WHAT'S ON

Ocean Swim Fiji
19 to 23 May

REF.	HOTELS	PAGE
1	Hilton Fiji Beach Resort & Spa	22
2	Radisson Blu Resort Fiji Denarau Island	23
3	Sofitel Fiji Resort & Spa	24



Denarau Golf & Racquet Club



Bula Bus

DENARAU ISLAND ACCOMMODATION

HILTON FIJI BEACH RESORT & SPA



Denarau Island
MAP PAGE 21

From **\$506***

- ❖ Beachfront resort with nine outdoor pools
- ❖ Kids will love the Ika Kids Club
- ❖ Koro is the exclusive adults only area featuring two beachfront pools, a bar, all day dining and live entertainment

Includes full breakfast daily.

Location: Located on 2.5 kilometres of beach on Denarau Island. The resort is a 10 minute drive from the centre of Nadi and a 20 minute drive from Nadi Airport. Distances: Beachfront, Nadi Airport 14km.

Getting There: We recommend airport transfers be booked in conjunction with your accommodation. See page 12 for further details.

Property Features: Free Wi-Fi (common areas), Pools (9 – including adults only and family zones), Restaurants (4), Bar, Deli, KORO (adults only area – free), 24 hour room service, Kids club 3-12 years (free), Day spa, Gym, Parking (free), 349 rooms.

Room Features: Wi-Fi (extra charge), Air-conditioning, Balcony, Limited cooking facilities (except Guestroom), Barbecue (except Guestroom), Cable TV, DVD player, Washer/dryer (except Guestroom).

Max Capacity: Beachfront Guestroom – 2, Garden View Guestroom/1 Bedroom Garden View/1 Bedroom Beachfront – 3, 2 Bedroom Garden View/2 Bedroom Beachfront/ 2 Bedroom Beachfront Residence/Penthouse – 5. Other room types also available.



Garden View Guestroom

FLYING WITH FIJI AIRWAYS?

Check-in for your Fiji Airways flight from the comfort of the resort. Boarding passes are issued, bags tagged and transported securely to the airport, giving you more time to enjoy the resort before you leave for the airport. At the airport, bypass check-in and head straight to security and immigration.



*FROM PRICES ARE A GUIDE ONLY, subject to change and availability and are in Australian Dollars. Prices are per room per night for 2 people, unless otherwise specified and based on the lowest room category for travel in low season. For full terms and conditions, refer to the Booking Conditions on the inside back cover of this brochure.

RADISSON BLU RESORT FIJI DENARAU ISLAND



Chantara Restaurant

Denarau Island
MAP PAGE 21

From **\$742***

- ❖ Beachfront resort with a private beach and a Waterfall Lawn
- ❖ Four lagoon pools with dedicated adults only pool and kids pool with slide
- ❖ Plenty of non-motorised watersports available for hire
- ❖ Great resort for families with a kids club and suites with cooking facilities
- ❖ Wide range of dining options – 5 restaurants and 2 specialty dining experiences

Includes full breakfast daily.

Location: On Fiji's largest resort island and boasting upscale beachfront accommodation just 25 minutes from Nadi International Airport. Distances: Beachfront, Nadi Airport 16km.

Getting There: We recommend airport transfers be booked in conjunction with your accommodation. See page 12 for further details.

Property Features: Pools (4 – including adults only), Restaurants (5), Bars (3 – 1 swim-up), 24 hour room service, Harmony Retreat Spa (day spa), Kids club 4-12 years (extra charge), Nanny service 0-12 years (extra charge), 270 rooms.

Room Features: Air-conditioning, Fan, Balcony or courtyard, Limited cooking facilities with microwave and dishwasher (1 and 2 Bedroom Suites), Cable TV, In-room movies, Ironing facilities, Washer/dryer (1 and 2 Bedroom Suites), Hair dryer, Safe.

Max Capacity: Standard Garden View/Superior Lagoon View – 2 adults/1 child, Deluxe Courtyard Twin – 2 adults/2 children, 1 Bedroom Garden View Suite/1 Bedroom Lagoon View Suite – 2 adults or 2 adults/3 children, 2 Bedroom Garden View Suite/2 Bedroom Lagoon View Suite – 6 adults or 4 adults/3 children. Other room types also available.



Standard Garden View



*FROM PRICES ARE A GUIDE ONLY, subject to change and availability and are in Australian Dollars. Prices are per room per night for 2 people, unless otherwise specified and based on the lowest room category for travel in low season. For full terms and conditions, refer to the Booking Conditions on the inside back cover of this brochure.

DENARAU ISLAND ACCOMMODATION

SOFITEL FIJI RESORT & SPA



Waitui Bar & Grill



Niu Beach Club – Kids Club

Denarau Island
MAP PAGE 21

From **\$753***

- ❖ Beachfront location with lagoon style swimming pool
- ❖ Family friendly facilities including kids club with zipline and splash park
- ❖ Four restaurants including the signature beachfront restaurant, Solis
- ❖ Home to Denarau's late night venue – Republik Night Club
- ❖ Waitui Beach Club – an adults only sanctuary located within the resort

Includes full breakfast daily.

Location: On Denarau Island, just 20 minutes' drive from Nadi International Airport. Distances: Beachfront, Nadi Airport 15km.

Getting There: We recommend airport transfers be booked in conjunction with your accommodation. See page 12 for further details.

Property Features: Pools (3 – 1 lagoon, 1 children's, 1 adults only), Spa, 24 hour reception, Restaurants (4) Bars (4), Kids Beach Club 3-12 years (extra charge), Teen Zone 8-16 years, Fitness centre, Sofitel Spa, Sofitel Salon, Use of non-motorised watersports (free), Resort shops (5), 298 rooms.

Room Features: Air-conditioning, Balcony or patio, Mini bar, Tea/coffee making facilities, Cable TV, In-room movies (free), Bathrobes.

Max Capacity: Luxury/Waitui Beach Club/Waitui Plus Beach Club/Prestige Suite – 2.



Luxury Room

FLYING WITH FIJI AIRWAYS?

Check-in for your Fiji Airways flight from the comfort of the resort. Boarding passes are issued, bags tagged and transported securely to the airport, giving you more time to enjoy the resort before you leave for the airport. At the airport, bypass check-in and head straight to security and immigration.



* FROM PRICES ARE A GUIDE ONLY, subject to change and availability and are in Australian Dollars. Prices are per room per night for 2 people, unless otherwise specified and based on the lowest room category for travel in low season. For full terms and conditions, refer to the Booking Conditions on the inside back cover of this brochure.



Shangri-La Yanuca Island, Fiji



CORAL COAST & PACIFIC HARBOUR

The Coral Coast located on the southern coast of Viti Levu is a firm favourite for couples and families. Here you will find palm-fringed beachfront resorts, stunning surf beaches and an array of outdoor activities to suit everyone. Surfing the reef breaks here is incredible and there are numerous other water activities to enjoy. Swim, snorkel or take to the open ocean for game fishing. Pacific Harbour lies on the eastern shores of the Coral Coast and is the adventure capital of Fiji. Here, the spectacular Beqa Lagoon is set against a backdrop of lush, tropical mountains with the region offering endless options for exploration and adventure.

REF.	HOTELS	PAGE
1	Likuri Island Fiji	26
2	Intercontinental Fiji Golf Resort & Spa	28
3	Nanuku Resort Fiji	29
4	Outrigger Fiji Beach Resort	29
5	Shangri-La Yanuca Island, Fiji	27
6	The Naviti Resort	26
7	The Pearl Resort & Spa, Fiji	27
8	Warwick Fiji	28

SEE

- Visit the Sigatoka Sand Dunes National Park, home to an extensive dune system and archaeological site dating back 3000 years
- See endangered native species like the peregrine falcon and crested iguana at Fiji's only wildlife park, Kula Wild Adventure Park

DO

- Take a thrilling jetboat adventure to the heart of Fiji's main island with a Sigatoka River Safari
- Visit the markets around the Sigatoka Valley for fresh fruit and vegetables, the area is known as 'Fiji's salad bowl'

WHAT'S ON

Coral Coast Festival

September (dates to be confirmed)

Uprising Festival of Music, Dance & Lights

October/November (dates to be confirmed)



Upper Navua River Canyon



Outrigger Fiji Beach Resort

CORAL COAST & PACIFIC HARBOUR ACCOMMODATION

LIKURI ISLAND FIJI



Beachfront Bure

Likuri Island, Fiji
MAP PAGE 25

From **\$215**^{**^}

- ❖ Traditional Island style Fiji bungalow accommodation
- ❖ Family friendly resort
- ❖ Enjoy complimentary Fijian weaving, cooking and craft lessons

Location: Located beachfront on Likuri Island. Distances: Beachfront, Nadi Airport 48km.

Getting There: We recommend transfers to be booked in conjunction with your accommodation. See page 12 to 13 for further details.

Property Features: Restaurant, Bar, Pool, Day spa, Parking, Use of snorkelling equipment and non-motorised watersports equipment (free), Daily activities program (free), 23 rooms.

Room Features: Air-conditioning (Beachfront Bure), Balcony, Tea/coffee making facilities, Refrigerator (Beachfront Bures & Likuri Beach house).

Max Capacity: Beachfront Bure – 4 adults or 2 adults/2 children, Island Bure – 2 adults. Other room types also available.

^Compulsory meal plan of FJD119.00 per adult and FJD59.50 per day applies and is payable direct upon arrival.



THE NAVITI RESORT



Garden View

Queens Road, Korolevu
MAP PAGE 25

From **\$454***

- ❖ The resort overlooks a calm lagoon
- ❖ Kids will love the Ratu & Adi Vonu Kids Club
- ❖ Resort offers all-inclusive packages with meals, drinks and select activities

Includes full breakfast daily and welcome drink on arrival.

Location: On the beach midway between Nadi and the Fijian capital Suva on the Coral Coast. Distances: Beachfront, Nadi Airport 90km.

Getting There: We recommend airport transfers be booked in conjunction with your accommodation. See page 12 for further details.

Property Features: Golf course (9 hole), Pool, Spa, Restaurants (4), Bars (2 – 1 swim-up), Room service, Kids club 5-12 years (free), Joy Spa (day spa), Gym, Laundry, Use of non-motorised watersports, 220 rooms.

Room Features: Air-conditioning, Balcony or patio, Tea/coffee making facilities, Cable TV, Ironing facilities.

Max Capacity: Garden View/Ocean View/Suite – 3 adults or 2 adults/2 children, Studio Villa – 2, 1 Bedroom Oceanfront Villa – 3, Superior Garden View – 2 adults/3 children.



* FROM PRICES ARE A GUIDE ONLY, subject to change and availability and are in Australian Dollars. Prices are per room per night for 2 people, unless otherwise specified and based on the lowest room category for travel in low season. For full terms and conditions, refer to the Booking Conditions on the inside back cover of this brochure.

SHANGRI-LA YANUCA ISLAND, FIJI



Ocean Deluxe King



Yanuca Island
MAP PAGE 25

From **\$441***

- ❖ Great for families with an inflatable water park, kids club and pool
- ❖ Nine hole golf course designed by Peter Thompson
- ❖ Choose from five restaurants and three bars

Includes full breakfast daily.

Location: On Yanuca Island. The island is linked by a causeway to the mainland. Distances: Beachfront, Nadi Airport 60km.

Getting There: We recommend airport transfers be booked in conjunction with your accommodation. See page 14 for further details.

Property Features: Chapel, Golf course (9 hole), Pools (3), Restaurants (5), Bars (3), 24 hour room service, Kids club 4-11 years (free), Day spa, Non-motorised watersports, Tennis courts (2), Gym, Mini golf, Resort shop, Guest laundry, 443 rooms.

Room Features: Air-conditioning, Balcony or patio, Tea/coffee making facilities, Cable TV, Ironing facilities, Hair dryer, Bathrobes and slippers.

Max Capacity: Ocean Deluxe King/Ocean Deluxe Twin – 2 adults or 2 adults/2 children. Other room types also available.



THE PEARL RESORT & SPA, FIJI



Premium Garden View



Queens Highway, Pacific Harbour
MAP PAGE 25

From **\$401***

- ❖ Play a round of golf at The Pearl Golf & Country Club
- ❖ Spoil for choice with five restaurants and a swim up pool bar
- ❖ All rooms feature a balcony with garden or water views

Includes full breakfast daily.

Location: Set on the beach in the heart of Fiji's adventure capital of Pacific Harbour. Distances: Beachfront, Nadi Airport 150km.

Getting There: We recommend airport transfers be booked in conjunction with your accommodation. See page 12 for further details.

Property Features: Pool, Restaurants (4), Bar, Golf course (18 hole), 24 hour reception, Day spa, Steam room, Gym, Laundry, Parking, Non smoking, Use of snorkelling equipment and non-motorised watersports (free), Daily activities program (free), 210 rooms.

Room Features: Air-conditioning, Balcony, Tea/coffee making facilities, Mini bar (Penthouse suites) Refrigerator, Hair dryer, Cable TV, In-room movies (free), Ironing facilities.

Max Capacity: Premium Garden View/Premium Marina View/Premium Ocean View – 2 adults. Other room types also available.



*FROM PRICES ARE A GUIDE ONLY, subject to change and availability and are in Australian Dollars. Prices are per room per night for 2 people, unless otherwise specified and based on the lowest room category for travel in low season. For full terms and conditions, refer to the Booking Conditions on the inside back cover of this brochure.

CORAL COAST & PACIFIC HARBOUR ACCOMMODATION

WARWICK FIJI



Garden View

Queens Road, Korolevu
MAP PAGE 25

From **\$577***

- ❖ Perfect for families with complimentary kid's club and daily activities
- ❖ Take part in the Coral Viewing/Glass Bottom Boat Trip (weather permitting)
- ❖ Indulge at Warwick Spa, overlooking the stunning lagoon

Includes full buffet breakfast daily.

Location: On absolute beachfront along the Coral Coast, midway between Nadi Airport and the capital city of Suva. Distances: Beachfront, Nadi Airport 102km.

Getting There: We recommend airport transfers be booked in conjunction with your accommodation. See page 12 for further details.

Property Features: Pools (2), Restaurants (6), Bars (6), Room service, Kids club 3-12 years (free), Warwick Spa (day spa), Gym, Tennis courts (4), Squash courts (2), Hair salon, 24 hour reception, Non smoking, Parking (free), 247 rooms.

Room Features: Air-conditioning, Balcony, Tea/coffee making facilities, Cable TV, Ironing facilities, Hair dryer, Safe.

Max Capacity: Garden View/Ocean View – 3 adults or 2 adults/2 children, Superior Garden View – 2 adults/3 children, Warwick Club – 2, Suite – 2 adults/2 children.



INTERCONTINENTAL FIJI GOLF RESORT & SPA



Garden View King

Natadola Bay, Natadola
MAP PAGE 25

From **\$610***

- ❖ Play a round of golf on the 18 hole championship course
- ❖ Free use of non-motorised watersports for one hour per person per day
- ❖ Opt for a Club suite to enjoy the added benefits of Club InterContinental

Includes full breakfast daily.

Location: Located in Natadola Bay. Distances: Beachfront, Nadi Airport 53.9km.

Getting There: We recommend airport transfers be booked in conjunction with your accommodation. See page 12 for further details.

Property Features: Pools (3), Golf course (18 hole), Restaurants (3), Bars (4), 24 hour room service, Nightly entertainment, Kids club 4-12 years (extra charge), Nanny service (extra charge), Day spa, Gym, Laundry/dry cleaning service, 24 hour reception, 266 rooms.

Room Features: Air-conditioning, Balcony/Terrace, Mini bar, Tea/coffee making facilities, Smart TV, Ironing facilities, Outdoor Cleopatra bath.

Max Capacity: Garden View/Lagoon View/Pool View/Beachfront/Beachfront Suite/ Garden View Double – 3 adults or 2 adults/2 children. Other room types also available.



Club InterContinental



* FROM PRICES ARE A GUIDE ONLY, subject to change and availability and are in Australian Dollars. Prices are per room per night for 2 people, unless otherwise specified and based on the lowest room category for travel in low season. For full terms and conditions, refer to the Booking Conditions on the inside back cover of this brochure.

NANUKU RESORT FIJI



Nanuku Suite



2 Bedroom Garden Villa

11 Nanuku Dr, Pacific Harbour Fiji
MAP PAGE 25

From **\$688***

- ❖ Luxury boutique villa accommodation overlooking Beqa Lagoon
- ❖ Immerse in the culture of Fiji with Warrior Cooking and Kava Ceremonies
- ❖ Situated in Pacific Harbour, Fiji's adventure capital

Includes full breakfast daily.

Location: Beachfront near Pacific Harbour. Distances: Nadi Airport 143km.

Getting There: We recommend airport transfers be booked in conjunction with your accommodation. See pages 12 to 13 for further details.

Property Features: Pool, Spa, Restaurant, Bars (2) Kids club infants-14 years (free), Nanny service 0-8 years (free), Day spa, Games room, Gym, Use of snorkelling equipment, non-motorised watersports and bicycles (free), 37 rooms.

Room Features: Air-conditioning, Private pool (except Nanuku Suites), Balcony, Tea/coffee making, Kitchen (Residences), Mini fridge, Ironing facilities, In-room movies (free), Hair dryer, Safe.

Max Capacity: Nanuku suite – 3 adults or 2 adults/2 children, 2 Bedroom Garden Villa – 4 adults or 2 adults/2 children. Other room types also available.



OUTRIGGER FIJI BEACH RESORT



Resort View



Queens Highway, Sigatoka
MAP PAGE 25

From **\$489***

- ❖ Family friendly with kid's club, teen activity program and MeiMei nanny child minding service
- ❖ Fijian cultural activities, entertainment and non-motorised watersports

Includes welcome drink and cool towel on arrival.

Location: On the Coral Coast. Distances: Beachfront, Nadi Airport 80km.

Getting There: We recommend airport transfers be booked in conjunction with your accommodation. See page 12 for further details.

Property Features: Pools (2), Restaurants (5), Bars (5) Café, 24 hour room service, Kids club 3-12 years (free), Nanny service (extra charge), Day spa, Gym, Use of snorkelling equipment and non motorised watersports (free), Tennis courts (2), Yoga and meditation (free), Adventure Park, 24 hour reception, Guest lounge, 253 rooms.

Room Features: Air-conditioning, Ocean Views (Beachfront Bure's), Fan, Balcony, Mini bar, Refrigerator, LCD TV with casting services, Bathrobes.

Max Capacity: Resort View/Beachfront Bure – 3 adults or 2 adults/2 children. Other room types also available.



*FROM PRICES ARE A GUIDE ONLY, subject to change and availability and are in Australian Dollars. Prices are per room per night for 2 people, unless otherwise specified and based on the lowest room category for travel in low season. For full terms and conditions, refer to the Booking Conditions on the inside back cover of this brochure.



Yasawa Islands

Tourism Fiji

MAMANUCA & YASAWA ISLANDS

The Mamanuca and Yasawa Islands are one of the most idyllic destinations in Fiji. Lift the lid on the reef-fringed beaches and uncover well established island resorts, coral cays and uninhabited volcanic atolls perfect for a romantic picnic. The white sands and quintessential swaying palm trees are the main attractions of the islands, where diving and snorkelling are a must for water lovers.

SEE

- Take in spectacular 360 degree island and water views from the lookout on Vomo Island
- Visit the majestic Sawa-I-Lau limestone caves, considered the heart of the Yasawas

DO

- Surfers should not miss surfing at Cloudbreak, known to have some of the best surf breaks in the world
- Swimming with the giant manta rays from May to October each year as they glide through the Yasawa Islands crystal waters is an unmissable experience
- Learn to cook Fijian cuisine in a cooking class at one of the island resorts

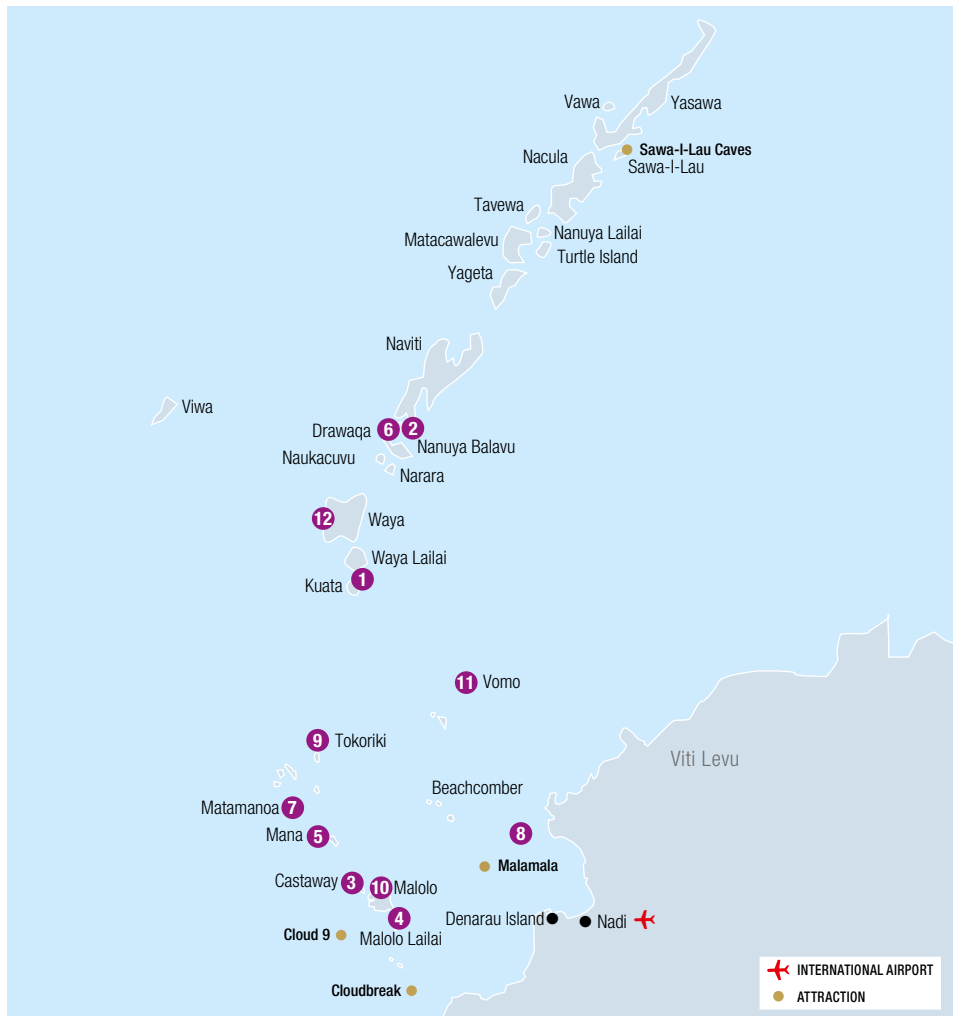
WHAT'S ON

Fiji Regatta Week

September (dates to be confirmed)

Mana Swim Festival

October (dates to be confirmed)



REF.	HOTELS	PAGE	REF.	HOTELS	PAGE
1	Barefoot Kuata Island Resort	31	4	Musket Cove Island Resort & Marina	34
2	Barefoot Manta Island Resort	31	4	Plantation Island Resort	32
3	Castaway Island, Fiji	33	8	Serenity Island Resort	35
4	Lomani Island Resort	33	9	Tokoriki Island Resort	36
5	Mana Island Resort & Spa – Fiji	31	10	Tropica Island Resort	34
6	Mantaray Island Resort	31	11	Vomo Island	37
7	Matamanoa Island Resort	34	12	Waya Island Resort	37

MAMANUCA & YASAWA ISLANDS ACCOMMODATION

BAREFOOT KUATA ISLAND



Kuata Island, Yasawa Islands Fiji
MAP PAGE 30

From **\$442**^{*^}

- ❖ Beachfront location with an authentic Fiji Island feel
- ❖ Cultural activities including marine conservation presentations and guided medicine walks

Location: Set on Kuata Island in the Yasawa Islands. Distance: Beachfront.

Getting There: From Nadi by coach/launch via Port Denarau. See pages 12 to 13 for details.

Property Features: Free Wi-Fi (common areas), Restaurant, Bar, Pools (2 – including children's), Spa, Child minding available (extra charge), Use of snorkelling equipment, Use of kayaks and stand-up paddle boards (free), 21 rooms.

Room Features: Balcony, Fan.

Max Capacity: Beachfront Rai Ki Waya Bure – 2 adults or 2 adults/2 children, Beachfront Levu Bure – 2 adults or 2 adults/3 children, Tei Tei Bure – 3 adults or 2 adults/3 children.

^ Compulsory meal plan of FJD139.00 per adult and FJD40.00 per night applies and is payable direct to the resort upon arrival.



BAREFOOT MANTA ISLAND



Beachfront Adi Bure

Drawaqa Island, Yasawa Islands, Fiji
MAP PAGE 30

From **\$391**^{*^}

- ❖ Snorkel with manta rays from May – Oct
- ❖ Enjoy the marine conservation centre with marine biology tours and diving experiences

Location: Set on Drawaqa Island, Yasawa Islands, Fiji. Distance: Beachfront.

Getting There: From Nadi by coach/launch via Port Denarau. See pages 12 to 13 for details.

Property Features: Free Wi-Fi (common areas), Restaurant, Bar, Child minding available (extra charge), Use of snorkelling equipment and non-motorised watersports (free), evening entertainment, 26 rooms.

Room Features: Patio, Fan.

Max Capacity: Beachfront Adi Bure – 2 adults, Beachfront Levu Bure – 2 adults/3 children or 3 adults, Beachfront Yanuyanu Bure – 2 adults/2 children.

^ Compulsory meal plan of FJD139.00 per adult and FJD40.00 per night applies and is payable direct to the resort upon arrival.



MANTARAY ISLAND RESORT



Reef Bure

Nanuya Balavu Island
MAP PAGE 30

From **\$466**^{*^}

- ❖ Great resort for active families and couples with many water activities
- ❖ Cultural activities and excursions are available
- ❖ Only resort on Nanuya Balavu Island

Location: Set on the island of Nanuya Balavu in the Naviti group of the Yasawa Islands. Distances: Beachfront.

Getting There: From Nadi Airport by coach/launch via Port Denarau or by helicopter or seaplane. See pages 12 to 14 for further details.

Property Features: Wi-Fi (common areas – extra charge), Restaurant, Bar, Sundeck, Nightly entertainment, Scuba and free diving school, Laundry service, 18 rooms.

Room Features: Wi-Fi (extra charge), Air-conditioning (except Seaside Bure and Treehouse Bure), Balcony or patio, Tea/coffee making facilities, Outdoor shower (except Seaside Bure), Non smoking.

Max Capacity: Treehouse Bure/Reef Bure – 2, Seaside Bure/Family Reef Bure – 3, Beachfront Villa – 4.

^ Compulsory meal plan of FJD59.00 per adult and FJD70.00 per night applies and is payable direct to the resort upon arrival.

MANA ISLAND RESORT & SPA – FIJI



Island Bure

Mana Island
MAP PAGE 30

From **\$646**^{*^}

- ❖ Two freshwater pools – an infinity edge and an adults only pool
- ❖ Family friendly resort with a kid's club and nanny service
- ❖ Promotes sustainability through turtle conservation and tree and coral planting

Location: A comfortable 90 minute trip from Port Denarau, the island is adorned with white sandy beaches and crystal blue rich coral waters. Distances: Beachfront.

Getting There: From Nadi Airport by coach/launch via Port Denarau or by helicopter. See pages 12 to 14 for further details.

Property Features: Wi-Fi (common areas – extra charge), Restaurants (5), Bars (4), Pools (2 – 1 family, 1 adults only infinity edge), Room service, Tennis courts, Kids club 3-12 years (extra charge), Nanny service (extra charge), Mana Spa (day spa), Gym, 160 rooms.

Room Features: Air-conditioning, Balcony or patio, Refrigerator, Safe.

Max Capacity: Island Bure – 3 adults or 2 adults/3 children, Ocean View Room – 3 adults or 2 adults/2 children, Deluxe Ocean View Bure – 4 adults or 2 adults/4 children. Beachfront Bure – 2. Other room types also available.



MAMANUCA & YASAWA ISLANDS ACCOMMODATION

PLANTATION ISLAND RESORT



Coconut Kids Club



Malolo Lailai Island
MAP PAGE 30

From **\$435***

- ❖ Family friendly resort with a variety of accommodation options
- ❖ Kids will love the inflatable waterpark and Coconut Kids Club!
- ❖ Four freshwater pools to enjoy
- ❖ Black Coral Grill offers fresh seafood and meat which can be cooked on a unique volcanic stone
- ❖ Coral conservation program available for guests offers coral planting, kids talks and fish house making

Includes welcome drink and shell lei on arrival.

Location: Absolute beachfront resort nestled on the island of Malolo Lailai, offering kilometres of white, sandy beach overlooking a sheltered lagoon. It is a 50 minute boat ride or 10 minute flight from Nadi. Distances: Beachfront.

Getting There: From Nadi Airport by coach/launch via Port Denarau or by helicopter or seaplane. See pages 12 to 14 for further details.

Property Features: Free Wi-Fi (common areas), Pools (4 – 1 lagoon, 1 waterslide), Golf course (9 hole), Restaurants (3), Bars (2), Inflatable water park (5-16 years), Kids club 4-12 years (free), Teens club 13-16 years (free), Nanny service (extra charge), Playgrounds (3), Day spa, Tennis court, Basketball court, Bicycle hire, Hammocks, Resort shop, Convenience store, Hair salon, Guest laundry, Use of non-motorised watersports (free), Fijian cultural activities, Coral conservation program (free), 195 rooms.

Room Features: Wi-Fi (extra charge), Air-conditioning, Fan, Balcony or patio, Tea/coffee making facilities, Refrigerator, Safe, All rooms non smoking.

Max Capacity: Garden/Poolside/Studio Garden Bure/Beachfront Bure – 4 adults/1 child, Beachfront Hotel – 4, 2 Bedroom Garden Bure – 6.



Garden



* FROM PRICES ARE A GUIDE ONLY, subject to change and availability and are in Australian Dollars. Prices are per room per night for 2 people, unless otherwise specified and based on the lowest room category for travel in low season. For full terms and conditions, refer to the Booking Conditions on the inside back cover of this brochure.

MAMANUCA & YASAWA ISLANDS ACCOMMODATION

CASTAWAY ISLAND, FIJI



Island Bure

Castaway Island, Fiji
MAP PAGE 30

From **\$895***

- ❖ Family friendly with a family pool, family rooms and kid's club
- ❖ Quiet zone pool with swim up pool bar and jacuzzi
- ❖ Free guided island walk and guided sunset kayak trips

Includes welcome drink on arrival and weekly management cocktail party.

Location: Set on a private island in the heart of Fiji's Mamanuca Islands, surrounded by white sand beaches and vibrant coral reefs. Distances: Beachfront.

Getting There: From Nadi Airport by coach/launch via Port Denarau or by helicopter. See pages 12 to 14 for further details.

Property Features: Free Wi-Fi (common areas), Pools (2), Restaurants (4), Bars (4), Kids club 3-12 years (free), Nanny service (extra charge), Massage facilities, Dive centre, Tennis court, Table tennis, Resort shop, Guest laundry, 24 hour reception, 65 rooms.

Room Features: Air-conditioning, Fan, Balcony/patio, Tea/coffee making facilities, Refrigerator, Bathrobes, Hair dryer, Safe.

Max Capacity: Island Bure/Ocean View Bure/North Beach Bure/South Beach Bure – 5, Grand Bure – 6, Family Beach Bure – 10.



LOMANI ISLAND RESORT



Deluxe Suite

Malolo Lailai Island
MAP PAGE 30

From **\$812***

- ❖ Exclusive adults only boutique resort, perfect base for relaxation or adventure
- ❖ Join the free dolphin safari, daily guided snorkelling and village tours
- ❖ All rooms boast ocean views and beach access

Includes full breakfast daily, welcome drink and shell lei on arrival.

Location: On Malolo Lailai Island, in the Mamanuca Islands to the west of Fiji's main island Viti Levu. Distances: Beachfront.

Getting There: From Nadi Airport by coach/launch via Port Denarau or by helicopter or seaplane. See page 12 to 14 for further details.

Property Features: Pool (lagoon), Restaurant, Bar, Room service, Lomani Spa (day spa), Gym, Use of snorkelling equipment and non-motorised watersports, 30 rooms.

Room Features: Private plunge pool (Beachfront Pool Bure), Ocean views, Air-conditioning, Balcony or patio, Refrigerator, Television, Bathrobes, Hair dryer.

Max Capacity: Deluxe Suite – 3, Beachfront Bure/Beachfront Pool Bure – 2.



Beachfront Pool Bure



*FROM PRICES ARE A GUIDE ONLY, subject to change and availability and are in Australian Dollars. Prices are per room per night for 2 people, unless otherwise specified and based on the lowest room category for travel in low season. For full terms and conditions, refer to the Booking Conditions on the inside back cover of this brochure.

MAMANUCA & YASAWA ISLANDS ACCOMMODATION

MATAMANOIA ISLAND RESORT



Beachfront Pool Bure

Matamanoia Island
MAP PAGE 30

From **\$850***^

- ❖ Secluded adults only resort
- ❖ Private plunge pools in the villas and bures
- ❖ Unique treetop spa

Includes full breakfast daily.

Location: Set in the Mamanuca Islands approximately 30 kilometres west of Nadi International Airport. Distances: Beachfront.

Getting There: From Nadi Airport by coach/launch via Port Denarau. See page 12 to 13 for further details.

Property Features: Pool, Restaurant, Bar, Day spa, Tennis court, Nightly entertainment, Boutique, Laundry service, 47 rooms.

Room Features: Private plunge pool (Bure and Villa), Outdoor shower (Bure and Villa), Ocean views, Air-conditioning, Fan, Patio, Tea/coffee making facilities, Mini bar (on request), Bathrobes, Hair dryer.

Max Capacity: Resort – 2, Beachfront Pool Bure/Oceanfront Pool Villa – 3.

^ Minimum 3 night stay applies.



MUSKET COVE ISLAND RESORT & MARINA



Garden Bure

Malolo Lailai Island
MAP PAGE 30

From **\$798***

- ❖ Perfect resort for active couples and families
- ❖ Enjoy a drink at the Yacht Club Island Bar, an iconic sand between the toes bar
- ❖ Hire a bike and explore the resort's sandy paths

Includes breakfast, lunch and dinner daily, and arrival refreshment.

Location: Set in the Mamanuca Islands on Malolo Lailai, this resort is only a 60 minute cruise from Port Denarau. Distances: Beachfront.

Getting There: From Nadi Airport by coach/launch via Port Denarau or by helicopter or seaplane. See page 12 to 13 for further details.

Property Features: Free Wi-Fi (designated areas), Pool, Golf course (9 hole – adjacent), Restaurant, Bars (3), Café, Makare Day Spa, Marina, PADI dive centre, Nanny service (extra charge), Daily activities, Daily snorkelling excursion, 55 rooms.

Room Features: Wi-Fi (extra charge), Air-conditioning, Fan, Hammocks (Garden and Beach Bure), Limited cooking facilities with microwave (Villa), Hair dryer.

Max Capacity: Garden Bure – 3 adults or 2 adults/2 children, Lagoon Bure/2 Bedroom Island Villa – 4, Beach Bure (adults only) – 3, 2 Bedroom Garden Villa – 5.



TROPICA ISLAND RESORT



Deluxe Pool Bure

Malolo Island, Mamanuca Islands, Fiji
MAP PAGE 30

From **\$1051***

- ❖ Adults only resort
- ❖ Open air restaurant and bar with A La Carte menu, tapas style dining, and ocean views

Includes full breakfast daily and fresh coconut water on arrival.

Location: Set on Malolo Island, Mamanuca Islands, Fiji. Distance: Beachfront.

Getting There: From Nadi Airport by coach/launch via Port Denarau. See pages 12 to 13 for details.

Property Features: Pool, Restaurant, Bar, Day Spa, Laundry service, Room service, Evening entertainment, Use of snorkelling equipment and non-motorised watersports (free), 24 rooms.

Room Features: Pool, Private plunge pool (Sanctuary Pool Suite, Beachfront Pool Bure, Deluxe Pool Bure), Air-conditioning, Balcony, Tea/coffee making facilities, Refrigerator, Hair dryer, Ironing facilities, Sun lounge (Beachfront Bure, Beachfront Pool Bure, Deluxe Pool Bures), Safe.

Max Capacity: Beachfront Bure – 3 adults. Other room types also available.



* FROM PRICES ARE A GUIDE ONLY, subject to change and availability and are in Australian Dollars. Prices are per room per night for 2 people, unless otherwise specified and based on the lowest room category for travel in low season. For full terms and conditions, refer to the Booking Conditions on the inside back cover of this brochure.

SERENITY ISLAND RESORT



Serenity Island Resort, Kadavulaili, Mamanuca Islands, Fiji
MAP PAGE 30

From **\$316***

- ❖ Beachfront location with an outdoor pool
- ❖ Indulge at the Serenity Spa with indoor and outdoor treatment areas overlooking the beach
- ❖ Dine at the restaurant featuring daily menus and stunning Pacific Ocean views
- ❖ Family friendly with babysitting and child-minding facilities available

Includes light breakfast daily and welcome drink on arrival.

Location: Set on Serenity Island in the Mamanuca Islands. Distance: Beachfront.

Getting There: From Nadi Airport by coach/launch via Port Denarau. See pages 12 to 13 for details.

Property Features: Pool, Restaurant, Bar, Day spa, Gym, Hair salon, Laundry service, Non-smoking, Use of non-motorised watersports (free), 34 rooms.

Room Features: Air-conditioning, Balcony or patio, Tea/coffee making facilities, Flat screen TV, Mini bar, Hair dryer, Safe.

Max Capacity: Beachfront Bure – 2 adults, Ocean Breeze Bure – 2 adults/2 children, Palmview Bure – 2 adults.



Beachfront Bure



*FROM PRICES ARE A GUIDE ONLY, subject to change and availability and are in Australian Dollars. Prices are per room per night for 2 people, unless otherwise specified and based on the lowest room category for travel in low season. For full terms and conditions, refer to the Booking Conditions on the inside back cover of this brochure.

MAMANUCA & YASAWA ISLANDS ACCOMMODATION

TOKORIKI ISLAND RESORT



Tokoriki Island
MAP PAGE 30

From **\$2056**^{**^}

- ❖ Boutique adults only resort
- ❖ Romantic beach holiday for couples and honeymooners
- ❖ Complimentary use of stand-up paddle boards, kayaks and hobie cats
- ❖ Arrange an island beach picnic to the nearby Monu Island
- ❖ PADI Dive facility to discover the underwater life
- ❖ Cultural activities include village visits, local markets and kava ceremony

Includes welcome drink, cool towel and lei on arrival, afternoon tea daily and cocktail tasting and canapés every Tuesday, Thursday and Saturday.

Location: Set in the Mamanuca group of islands and easily accessed from Nadi. Enjoy a stunning 15 minute scenic helicopter or seaplane flight from Nadi International Airport or a one hour speedboat from Port Denarau. Distances: Beachfront.

Getting There: From Nadi Airport by coach/launch via Port Denarau or by helicopter. See pages 12 to 14 for further details.

Property Features: Free Wi-Fi (designated area), Chapel, Pools (2), Restaurants (2), Bar, Day spa, Boutique, Tennis court, Exercise platform, Evening entertainment, Dive centre, Reading bure with books and board games, Use of snorkelling equipment and non-motorised activities (free), 36 burees and villas.

Room Features: Plunge pool (Beachfront Pool Bure, Beachfront Pool Villa), Ocean views, Air-conditioning, Fan, Patio, Hammocks, Personalised mini bar (extra charge), Bathrobes, Hair dryer, Indoor and outdoor showers, Safe, All rooms non smoking.

Max Capacity: Beachfront Bure/Beachfront Pool Bure – 3, Beachfront Pool Villa – 2.

^ Minimum 2 night stay applies.



Beachfront Pool Villa



Beachfront Bure



*** FROM PRICES ARE A GUIDE ONLY**, subject to change and availability and are in Australian Dollars. Prices are per room per night for 2 people, unless otherwise specified and based on the lowest room category for travel in low season. For full terms and conditions, refer to the Booking Conditions on the inside back cover of this brochure.

MAMANUCA & YASAWA ISLANDS ACCOMMODATION

WAYA ISLAND RESORT



Deluxe Garden Bure

Waya Island, Yasawa Islands, Fiji
MAP PAGE 30

From **\$957***

- ❖ Boutique adults only resort
- ❖ Beachfront location with lush tropical landscape
- ❖ Enjoy guided hill hikes with stunning views

Includes breakfast lunch and dinner daily and a 15 minute foot ritual.

Location: Located on Waya Island in the Southern Yasawa Islands. The resort is only a 2 hour cruise from Port Denarau. Distances: Beachfront.

Getting There: We recommend transfers be booked in conjunction with your accommodation. See pages 12 to 13 for details.

Property Features: Pool, Restaurant, Bar, Day spa, Laundry service, 24 hour reception, Guest lounge, Library, Use of snorkelling equipment and non-motorised watersports (free), 18 rooms.

Room Features: Air-conditioning, Fan, Balcony, Tea/coffee making facilities, Refrigerator, Ironing facilities, Beach towels, Bathrobes and slippers, Hair dryer, Safe, All rooms non smoking.

Max Capacity: Deluxe Garden Bure – 2 adults. Other room types also available.



VOMO ISLAND



Hillside Villa

Vomo Island
MAP PAGE 30

From **\$1790*^**

- ❖ A private luxury island boutique resort set on 255 acres
- ❖ Adults only area with bar and infinity pool at the Vomo Rocks Pool
- ❖ Families will love the 4 hours of free babysitting daily and Kids Village

Includes breakfast, lunch, dinner daily, escorted snorkel safari daily and weekly managers cocktail party.

Location: A private island escape situated in the Mamanuca Islands, at the cusp of the Yasawa Islands. Distances: Beachfront.

Getting There: From Nadi Airport by coach/launch via Port Denarau or by helicopter or seaplane. See pages 12 to 14 for details. Transfers can also be arranged with Vomo direct.

Property Features: Pools (2), Golf course (9 hole), Restaurants (2), Bars (2), Kids club 3-12 years (free), Day spa, Use of non-motorised watersports (free), 40 rooms.

Room Features: Air-conditioning, Patio, Mini bar (free – excluding alcoholic beverages), Tea/coffee making facilities, Daily laundry service (free).

Max Capacity: Hillside Villa/Beachfront Villa/Beachfront Haven – 3 adults or 2 adults/ 2 children, Beachfront Family Retreat Villa – 3 adults/1 child or 2 adults/3 children.

^ Minimum 2 night stay applies.



* FROM PRICES ARE A GUIDE ONLY, subject to change and availability and are in Australian Dollars. Prices are per room per night for 2 people, unless otherwise specified and based on the lowest room category for travel in low season. For full terms and conditions, refer to the Booking Conditions on the inside back cover of this brochure.

REGIONAL FIJI

Get off the beaten track and experience the real Fiji in regional areas on the mainland or the Northern Islands. On Vanua Levu, coconut plantations and lush rainforest beg to be explored while Savusavu is a multicultural town set in beautiful surroundings. Taveuni is known as the Garden Isle, perfect for relaxation and adventure. Suva is Fiji's bustling capital and for the right blend of white sandy beaches, endless sunshine and coral reefs, head to Rakiraki on the Suncoast.

SEE

- Take in spectacular views of Tavoro Falls, Fiji's most iconic waterfalls on Taveuni Island

DO

- Tour the J Hunter Pearl Farm in Savusavu Bay and purchase one of their renowned pearls
- Dive the reefs off Rakiraki and see turtles, colourful coral and reef sharks

EAT

- In Savusavu, learn about the art of chocolate making on the Kokomana Chocolate tour and enjoy a delicious chocolate tasting session

WHAT'S ON

Friendly North Festival

October (dates to be confirmed)

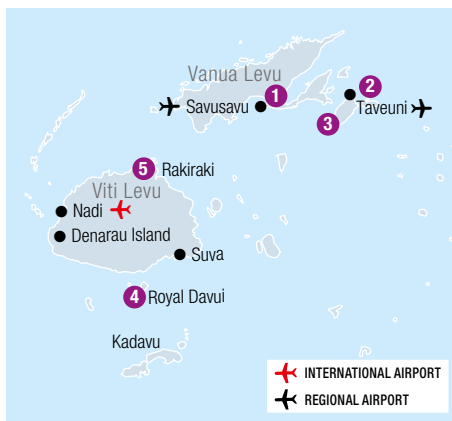
Savusavu Festival Week

November (dates to be confirmed)



Savasi Island Resort, Savusavu

Oliver Bolch



Tavoro Falls, Taveuni Island

REF.	HOTELS	PAGE
1	Koro Sun Resort & Rainforest Spa, Savusavu	38
2	Matangi Private Island Resort	39
3	Paradise Taveuni	38
4	Royal Davui Island Resort	40
1	Savasi Island Resort, Savusavu	40
5	Volvivi Beach Resort, Rakiraki	40

KORO SUN RESORT & RAINFOREST SPA, SAVUSAVU ♦♦♦♦



Hibiscus Highway, Savusavu, Vanua Levu

MAP PAGE 38

From **\$467***

- ♦ Indulgent Spa, hidden in the spectacular rainforest and beside a small waterfall
- ♦ Perfect for romance with Fiji's most affordable overwater accommodation
- ♦ Great for families with a kids pool, waterslide, kids club and nanny service

Includes full breakfast and afternoon tea daily.

Location: Set on a 160 acre rainforest sanctuary on the island of Vanua Levu with beautiful lush tropical surroundings. Distances: Waterfront, Savusavu Airport 12km.

Getting There: From Nadi Airport by plane then vehicle transfers from Savusavu Airport or Labasa Airport. Transfers are included. Ask your travel agent for details.

Property Features: Pools (2), Spa, Golf course (9 hole), Restaurants (3), Bars (4), Day spa, Kids club 4-12 years (free), Nanny service (free), 56 rooms.

Room Features: Air-conditioning, Fan, Patio, Tea/coffee making facilities, Ironing facilities, Hair dryer, Safe.

Max Capacity: Tropical Bure/Garden Bure/Edgewater Bure/Edgewater Floating Bure – 2, Edgewater Pool Bure – 3, 2 Bedroom Pool Bure/Edgewater Villa – 4. Other room types also available.



PARADISE TAVEUNI ♦♦♦♦



Vuna Road, Taveuni Island

MAP PAGE 38

From **\$876***

- ♦ Enjoy the some of the best soft coral scuba diving in Fiji
- ♦ Dive the famous Rainbow Reef and The Great White Wall
- ♦ Lean to dive at the PADI Dive Centre on site

Includes breakfast, lunch and dinner daily.

Location: Positioned at the southern end of Taveuni and set on five acres of elevated oceanfront land. Distances: Beach 50m, Taveuni Matei Airport 42km.

Getting There: From Nadi Airport by plane to Taveuni Airport, then private car to Paradise Taveuni. Private car transfers are included. Ask your travel agent for details.

Property Features: Free Wi-Fi (bar area only), Pool, Spa, Restaurant, Bar, Room service, Day spa, Guest lounge, Resort shop, Laundry service, 16 rooms.

Room Features: Wi-Fi (extra charge), Air-conditioning, Patio, Tea/coffee making facilities, Outdoor shower, Hair dryer, Safe.

Max Capacity: Oceanview Bure/Oceanfront Vale – 2, Oceanfront Bure/Luxury Oceanfront Bure – 4, Oceanview Family Bure – 2 adults/2 children. Other room types also available.



MATANGI PRIVATE ISLAND RESORT



Matangi Island, Fiji
MAP PAGE 38

From **\$860***

- ❖ Nestled within a secluded sanctuary in a remote pristine part of Fiji
- ❖ Boutique and unique adults only resort
- ❖ Arrange a romantic picnic in the breathtaking Horseshoe Bay
- ❖ Cultural activities including Kava ceremonies, coconut shows and medicine talks

Includes breakfast, lunch and dinner daily.

Location: A private Island escape located on Matangi Island in the Vanua Levu group in northern Fiji. Distances: Beachfront.

Getting There: From Nadi Airport by plane to Taveuni Airport, then car and boat transfer to Matangi Island.

Property Features: Free W-Fi (Public areas only), Pool, Restaurant, Bar, Day spa, Laundry facilities, Non smoking, Guest lounge, Use of non-motorised watersports (free), 11 rooms.

Room Features: Air-conditioning, Balcony, Tea/coffee making facilities, Refrigerator, Hair dryer, Safe.

Max Capacity: Oceanfront Bure – 3 adults, Beachfront Bure – 3 adults, Treehouse Bure – 2 adults, Beachfront Treehouse with Plunge Pool – 2 adults.



Oceanview Bure



*FROM PRICES ARE A GUIDE ONLY, subject to change and availability and are in Australian Dollars. Prices are per room per night for 2 people, unless otherwise specified and based on the lowest room category for travel in low season. For full terms and conditions, refer to the Booking Conditions on the inside back cover of this brochure.

REGIONAL FIJI ACCOMMODATION

VOLIVOLI BEACH RESORT, RAKIRAKI



Ocean View Room

Volivoli Road, Rakiraki, Viti Levu
MAP PAGE 38

From **\$359**^{*^}

- ❖ Boutique beachfront family-run resort
 - ❖ Friendly Fijian hospitality
 - ❖ Great for active guests with an exciting range of watersports
- Includes welcome drink and resort orientation.**

Location: A relaxed beachfront resort, just a two and half hour scenic coastal drive from Nadi International Airport on the northern most point of Viti Levu. Distances: Beachfront, Nadi Airport 143km.

Getting There: We recommend airport transfers be booked in conjunction with your accommodation. See page 12 for further details.

Property Features: Wi-Fi (extra charge), Pool, Restaurant (2), Bars (3 – 1 swim-up), Day spa, Dive shop, Fishing charters, Boutique, Parking (free), Private beach, 33 rooms.

Room Features: Wi-Fi (extra charge), Ocean views, Air-conditioning, Fan, Balcony.

Max Capacity: Ocean View/Luxury Ocean Front Villa – 4, Deluxe Ocean View – 4 adults or 2 adults/2 children. Other room types also available.

[^] Minimum 2 night stay applies.



SAVASI ISLAND RESORT, SAVUSAVU



Savasi Island
MAP PAGE 38

From **\$612**^{*^}

- ❖ Private island experience ideal for romance and adventure loving couples
- ❖ Luxury pool villas surrounded by lush gardens and sweeping ocean views
- ❖ Unique experiences include Cave Dining, River Tubing & Pearl Farm Tour

Includes breakfast, lunch and 3 course dinner daily, return transfers from Savusavu Airport, welcome cocktail and revival foot soak on arrival.

Location: A boutique island resort just ten minutes from Savusavu Airport on Vanua Levu. Distances: Beachfront, Savusavu 3km.

Getting There: From Nadi Airport by plane then free transfers from Savusavu Airport.

Property Features: Restaurant, Bar, Room service, Sea Spray Spa (day spa), Resort shop, Activity centre, Laundry service, Guest lounge, PADI dive centre, Use of snorkelling equipment and non-motorised water sports (free), 16 rooms.

Room Features: Wi-Fi, Private infinity pool (all villas), Ocean views (all villas), Air-conditioning, Patio, Tea/coffee making facilities, Outdoor bath (Sea Breeze Villa and Clifftop 5), Bathrobes, Hair dryer, Safe.

Max Capacity: Oceanfront Villa – 3, Grand Oceanfront Villa – 5. Other room types available.

[^] Minimum 2 night stay applies.



ROYAL DAVUI ISLAND



Lagoon Plunge Pool Bungalow

Royal Davui Island, Fiji
MAP PAGE 38

From **\$2149**^{*}

- ❖ Adults only resort
- ❖ Indulge in all-inclusive award-winning dining
- ❖ Unique cultural program and activities

Includes breakfast, lunch and dinner daily.

Location: Royal Davui Island Fiji. Distances: Beachfront, Nadi International Airport 141km.

Getting There: Airport transfers are available and can be arranged alongside your accommodation booking.

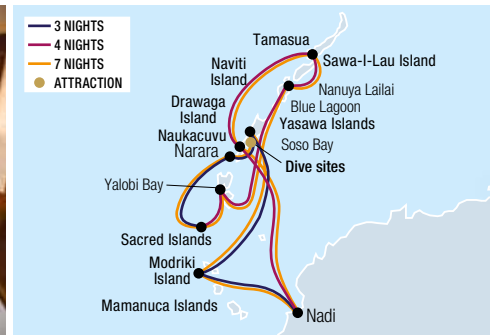
Property Features: Pool, Spa, Restaurant, Bar, Day spa, Room service, Mini bar, Gym, Laundry facilities, Cultural activities, Evening entertainment, Use of snorkelling equipment and non-motorised watersports (free), 16 rooms.

Room Features: Private plunge pool, Ocean or lagoon Views, Air-conditioning, Fan, Balcony, Sun lounge, Tea/coffee making facilities, Refrigerator, Mini bar, Ironing facilities, Spa bath (Island plunge pool villas), Hair dryer, Safe.

Max Capacity: Lagoon Plunge Pool Bungalow – 2 adults, Island Plunge Pool Bungalow – 3 adults. Other room types also available.



* FROM PRICES ARE A GUIDE ONLY, subject to change and availability and are in Australian Dollars. Prices are per room per night for 2 people, unless otherwise specified and based on the lowest room category for travel in low season. For full terms and conditions, refer to the Booking Conditions on the inside back cover of this brochure.



FIJI PRINCESS – BLUE LAGOON CRUISES

With over 70 years sailing the tropical waters of the South Pacific, Blue Lagoon Cruises specialises in offering three, four and seven night itineraries through Fiji's spectacular Mamanuca and Yasawa Island groups. The M.V. Fiji Princess accommodates a maximum of 64 guests allowing for a personal and friendly atmosphere, which is complemented by the enthusiastic all-Fijian crew. The ship's small size means it can access bays and islands that would be impossible to reach in a larger ship. With a maximum of four hours cruising per day there is more time for exploring onshore. Visit remote island villages, discover ancient Fijian culture and enjoy the private beach on Nanuya Lailai Island. Swim with Manta rays (seasonal) and stop off at the Sacred Islands and Sawa-I-Lau Caves. A Blue Lagoon Cruise is an ideal way to experience the hidden wonders of the South Pacific you previously thought only existed in the movies.

Vessel Features:

- Free satellite Wi-Fi (where reception is available)
- Day spa • Open air dining room
- Shaded sky deck bar and open air lounge and bar
- Splash pool • Guest laundry
- Lounge area

Cabin Features:

- Air-conditioning • Private ensuite • In-cabin movies
- Hair dryer • Television
- External windows with ocean views

Includes:

- Onboard accommodation
- All meals including tea, coffee, morning and afternoon tea, filtered water and juice
- Complimentary mini bar (on the day of departure only) includes premium beer and soft drinks, French sparkling wine and snacks
- Complimentary sparkling wine with breakfast daily
- Gift of a tote bag per cabin and reusable drink bottle and sulu (sarong) per person
- Complimentary Malamala Beach Club Day Pass with FJD50 food and beverage credit per adult (3 and 7 night cruise)
- Sunset hour offering 25% discount off drinks and complimentary canapés (selected days)
- Captains Welcome with complimentary sparkling wine, local beers and canapés served between 6pm to 7pm
- Filtered mineral water stations throughout the vessel
- All scheduled cruise excursions and activities

- Entrance fees for all activities and village visits
- Traditional Fijian entertainment
- Snorkelling equipment and use of all watersports at Nanuya Lailai (4 and 7 night cruise)
- Ship to shore transfers • All port charges and taxes
- Transfers to/from Port Denarau to/from Nadi Airport or Nadi/Denarau/Wailoaloa hotel

Departure Information:

From Port Denarau

3 NIGHT EXPLORER CRUISE

Departs: Friday at 3pm
Returns: Monday at 3pm

4 NIGHT WANDERER CRUISE

Departs: Monday at 12:15pm
Returns: Friday at 10am

7 NIGHT ESCAPE TO PARADISE CRUISE

Departs: Friday at 3pm
Returns: Friday at 10am

Sole use and launch transfer prices from Mamanuca Island resorts also available. Family Cruise departures also available, ask your travel agent for details.



3 NIGHT EXPLORER CRUISE	
Day 1:	Depart Port Denarau to Modriki Island
Day 2:	Soso Bay
Day 3:	Naukacuvu Island
Day 4:	Sacred Isles and arrive Port Denarau

4 NIGHT WANDERER CRUISE	
Day 1:	Depart Port Denarau to Yalobi Bay
Day 2:	Blue Lagoon
Day 3:	Sawa-I-Lau Island
Day 4:	Drawaqa Island
Day 5:	Arrive Port Denarau

7 NIGHT ESCAPE TO PARADISE CRUISE	
Combine the 3 and 4 night cruise for a 7 Night Escape to Paradise Cruise	

	Adult
3 NIGHT	
Hibiscus Cabin	\$2275* [^]
Orchid Cabin	\$2522* [^]
4 NIGHT	
Hibiscus Cabin	\$3232* [^]
Orchid Cabin	\$3587* [^]
7 NIGHT	
Hibiscus Cabin	\$4975* [^]
Orchid Cabin	\$5580* [^]
[^] Price based on per person twin share.	

*FROM PRICES ARE A GUIDE ONLY, subject to change and availability and are in Australian Dollars. Prices are per person twin share, unless otherwise specified and based on the lowest room category and travel in low season. For full terms and conditions, refer to the Booking Conditions on the inside back cover of this brochure.

ACCOMMODATION INDEX

NADI AND SURROUNDS

Crowne Plaza Fiji Nadi Bay Resort & Spa	20
DoubleTree Resort by Hilton Fiji – Sonaisali Island	19
Fiji Gateway Hotel	18
First Landing Beach Resort and Villas	18
Novotel Nadi	19
Tanoa International Hotel	19

Other Accommodation Options

- Smugglers Cove Beach Resort Nadi
- Landers Bay Resort & Spa
- Ramada Suites Wailoaloa Beach Fiji

DENARAU ISLAND

Hilton Fiji Beach Resort & Spa	22
Radisson Blu Resort Fiji Denarau Island	23
Sofitel Fiji Resort & Spa	24

Other Accommodation Option

- The Palms Denarau

CORAL COAST & PACIFIC HARBOUR

InterContinental Fiji Golf Resort & Spa	28
Likuri Island resort	26

Nanuku Resort Fiji	29
The Naviti Resort	26
Outrigger Fiji Beach Resort	29
Shangri-La Yanuca Island, Fiji	27
The Pearl Resort & Spa	27
Warwick Fiji	28

Other Accommodation Options

- Bedarra Beach Inn
- Tambua Sands Resort Fiji

MAMANUCA & YASAWA ISLANDS

Barefoot Kuata Island	31
Barefoot Manta Island	31
Castaway Island	33
Lomani Island Resort	33
Mana Island Resort & Spa – Fiji	31
Mantaray Island Resort	31
Matamanoa Island Resort	34
Musket Cove Island Resort & Marina	34
Plantation Island Resort	32
Serenity Island Resort	35
Tokoriki Island Resort	36

Tropica Island Resort	34
Vomo Island	37
Waya Island Resort	37

Other Accommodation Options

- Treasure Island resort
- Six Senses Fiji
- Malolo Island Resort

REGIONAL FIJI

Koro Sun Resort & Rainforest Spa, Savusavu	38
Matangi Private Island Resort	39
Paradise Taveuni	38
Royal Davui Island	40
Savasi Island Resort, Savusavu	40
Volivoli Beach Resort, Rakiraki	40

Other Accommodation Options

- Jean-Michel Cousteau Resort Fiji



Yasawa Islands

Tourism Fiji

Please read these Booking Conditions carefully as they apply to all bookings with Viva Holidays.

HOW TO BOOK

Contact your ATAS travel agent and request a reservation. All verbal quotes provided are an estimate only and subject to change until confirmed in writing.

PRICES & CONDITIONS

This brochure was produced on 18 October 2024 Unless otherwise stated, prices are in Australian dollars and include GST where applicable. Exchange rates used when pricing this brochure are as at 8 October 2024. All prices are subject to availability, subject to change and can be withdrawn or varied without notice. Prices are to be used as a guide only. Accommodation prices are based on the lowest room category in low season. All other prices are based on travel in low season. Some prices are based on dynamic rates, which means the price may be higher or lower than the advertised price if the price has been varied by the supplier after this brochure was printed. Price changes may occur by reason of matters outside our control which increase the cost of the Product or Service. Such factors include (without limitation) adverse currency fluctuations, fuel surcharges, or increases to taxes. Surcharges and minimum stays may apply due to demand, Christmas and New Year's Eve, school and public holidays, special events and other circumstances. All prices are the lowest available prices at the time of print and are a guide only. Please check all prices, availability, fees, conditions and information with your travel agent before booking.

If we must change any part of your booking for reasons beyond our control, for example, an Accommodation Supplier overbooks accommodation, or if there is an increase in taxes or Supplier charges, we will notify you. If any such changes result in your holiday costing more or otherwise being materially different from that originally booked, you may cancel the booking and we will refund any monies already paid less any charges levied by Suppliers.

PRICES DO NOT INCLUDE

Anything not specifically indicated as being an inclusion.

OMISSIONS & ERRORS

While every effort is made to ensure the accuracy and currency of the information in the brochures, errors or omissions may occur. All errors and omissions identified post the date of publication are notified to our retail partners to advise you. Please check with your agent for all up-to-date corrections, including prices and inclusions.

DEPOSITS & FINAL PAYMENTS

Deposit

A minimum non-refundable deposit of \$55 per person is payable within 7 days of confirmation of your booking. You will be notified at the time of booking if any additional deposit is required. All deposits are non-refundable for changes of mind or cancellations by you (subject to your rights under the Australian Consumer Law).

Final Payment

Final payment of your holiday cost is required no later than 30 days prior to departure or by sale end date or by the payment deadline specified in individual package conditions, whichever is earlier. Some services may require full payment at the time of booking. For bookings made less than 31 days prior to travel, full payment of holiday cost is required at the time your booking is confirmed.

Please ensure payments are made by the due dates. If this does not happen, our system will automatically cancel the booking without notice or liability to you.

Only upon payment of the full cost of your holiday do you have a final booking with the Supplier of the relevant good and/or service. In arranging your booking, Viva Holidays is acting as the agent of the Supplier of the relevant Product and at no time do you have a contract with Viva Holidays.

CREDIT & DEBIT CARD SURCHARGES

A fee will apply for payments made by debit and credit cards. Fees may vary depending on card type. Please check this fee with us or your travel agent when booking.

FEES

Amendment Fees

If you wish to change your booking prior to departure, an amendment fee of \$30 will be charged if the overall value of the booking remains the same or decreases, in addition to any fees imposed by the Supplier of each service booked.

Late Booking Fees

A fee of \$30 will be charged for all bookings made less than 7 days prior to travel.

All fees can be varied without notice.

CANCELLATIONS & REFUNDS

Prior to Final Payment

Your deposit is forfeited.

After Final Payment

There will be no refund of your deposit, in addition to any fees imposed by the Supplier, which may be up to 100% of monies paid.

After Travel

There will be no refund if you cancel your booking once travel has commenced. There will be no refund for unused services, except for OPEN DATED services where the service was not booked with the Supplier. Requests for refunds received more than 6 months after departure date will not be accepted.

Should a refund after departure be approved, a \$110 refund processing fee will apply.

RESPONSIBILITY

Viva Holidays acts as an agent for the Suppliers (transport, tour, event or accommodation providers) who provide the various goods and/or services (Products). All bookings are subject to the terms and conditions and limitations of liability imposed by each Supplier. It is therefore important for you to obtain and read the applicable Supplier's terms and conditions as they may limit or exclude their liability to you.

In producing this brochure, we have used information provided by Suppliers. Irrespective of any measures taken by us to ensure the information contained in this brochure is accurate at the time of printing, Viva Holidays disclaims and will be exempt from liability in respect of anything misleading, false, incomplete or inaccurate and any errors, misdescription and all associated disappointment, loss, expense, damage, inconvenience, delay, death, shock, illness or injury, however caused.

Viva Holidays does not control the manner in which Products featured within this brochure are provided. Viva Holidays disclaims and will be exempt from liability for anything to do with the supply of such Products. This includes liability (whether as a matter of contract, tort, statute, restitution, or otherwise) for any direct, indirect or consequential loss, liability, claim, cost, expense, proceeding, demand, penalty, disappointment, death, injury, illness, shock, inconvenience or delay. This limitation of liability also applies irrespective of the cause, including negligence of us or a Supplier, withdrawal, cancellation or failure to provide a Product, delay, any variation in the Product, the provision of substitute Products or a change in the Supplier. Without limitation, Viva Holidays will not be responsible if the Product is not available due to inclement weather conditions or other acts of God, civil disturbances, fire, floods, acts of Government or any other authorities, accident to or failure of machinery or equipment or industrial action.

MAPS & PHOTOGRAPHS

The maps in this brochure are intended as a guide only and are not to scale. They do not necessarily reflect actual routings or accommodation or attraction locations. Accommodation room photographs are representative only and actual rooms occupied may vary in decor and inclusions from those shown.

Some images used in this brochure are supplied courtesy of tourist bureaus, hotels, tour operators, Tourism Fiji/Andrea Rothlisberger/Andrew Lewthwaite/Chris McLannan, Blue Lagoon Cruises, Capitan Cook Cruises, Aaron K March, Adam Bruzzone, Brendan Veary, Bruce Southwick, David Kirkland, Don Mammoser, Kama Catch Me Photography, Marie Le Coze, Markus Gortz, Oliver Bolch, Peter Lange, Rob Rickman, Rob Rickman, Stephen Goodenough Photographer, Steve Allen, Steve Allen, Stray Cat Images, Tessa Chrisp, Tessa Chrisp, Tessa Chrisp and Thomas Vignaud.

PRODUCT DESCRIPTIONS

Product descriptions and accommodation ratings featured in this brochure are provided by the individual Suppliers. Facilities, features or ratings are subject to change at any time. Tours may not operate on certain dates and durations and departure times are approximate only. You should check at the time of booking for any changes to published information of which we may be aware.

BONDS

Bonds or credit card imprints are required by most Suppliers at the time of check-in to cover incidentals and fees not included in your holiday cost.

TRANSFERS & TOURS

Some Accommodation Suppliers provide courtesy transfers to/from the airport. It is essential that these transfers are pre-booked. Some Tour Suppliers provide complimentary pick up and return to your holiday accommodation and require a minimum number of passengers to operate. If minimum numbers are not achieved tours may be cancelled at short notice. Additionally, some Suppliers reserve the right to cancel departures for other reasons, including bad weather. Some tours and itineraries may also vary and attractions may be substituted due to seasonal conditions. Viva Holidays will not be held liable for a service variation, cancellation, delay or withdrawal, or a Supplier's failure to notify you. A full refund applies for the cancelled tour.

TRAVEL INSURANCE

We strongly recommend you take out appropriate travel insurance to cover your travel arrangements.

INTERNATIONAL TRAVEL

Each passenger is responsible for their own visa, passport (with at least 6 months validity), immigration, quarantine, customs and other requirements of the countries to be visited or transited through. Viva Holidays makes no representations as to the safety, conditions or other issues that may arise at any destination. Travel advice is available from the Australian Government at smartraveller.gov.au.

HEALTH

You must ensure you are aware of any health requirements and recommended precautions relevant to your travel and carry all necessary vaccination documentation with you to the countries to be visited. Failure to present required vaccination documentation may result in you being denied entry into a country. We recommend that you consult with your local doctor, travel medical service or specialist vaccination clinic before commencing your travel. General health advice for all destinations is also available from the Australian Government at smartraveller.gov.au.

PRIVACY

Viva Holidays collects information about you (including health information where necessary) to provide products and services to you, process your travel arrangements, facilitate your participation in loyalty programs and conduct marketing activities and market research. If the information is not provided, Viva Holidays may not be able to provide the Service requested. Viva Holidays may disclose your personal information to its related companies, carriers, travel service providers, organisations which provide services to Viva Holidays (more details are available in our Privacy Statement on our website vivaholidays.com.au) and various law enforcement agencies, airports and governments around the world for security, customs and immigration purposes. You may gain access to the information Viva Holidays holds about you by contacting our Privacy Officer in writing at 179 Normanby Road, South Melbourne VIC 3205 Australia or on privacyofficer@vivaholidays.com.au.

MONIES NOT HELD ON TRUST

All monies paid by you to us will be the property of Viva Holidays and will be a debt due and payable to the relevant Supplier (contingent on availing) once the services to which the money relates have been availed, or the relevant booking is cancelled (subject to cancellation fees). You agree and acknowledge that such monies will not be held by Viva Holidays on trust for or on behalf of you, and we may hold such monies in any account as we see fit, including with our own and/or other customer monies.

GOVERNING LAW

These conditions are governed by the laws of New South Wales, Australia and any action arising under them or in any way connected with a booking may be brought only in a court in New South Wales, Australia, subject to any law which is expressly inconsistent with this.

You acknowledge that you are 18 years of age or older and that you understand and agree with the above terms and conditions and our Privacy Policy. Please read our full booking terms and conditions at vivaholidays.com.au/policies/booking-conditions.



Mamanuca Islands



helloworld
TRAVEL
THE TRAVEL PROFESSIONALS



In store



13 14 15



helloworld.com.au

WE'RE
PROUD
TO BE
ATAS
travel accredited

VIVA
HOLIDAYS